

**FAR NORTH DISTRICT COUNCIL**  
**CONTRACT 7/18/101**

# **Road Maintenance and Renewals Contract**

**MONTHLY REPORT – MARCH 2023**

*Pokapu Rd – Unsealed  
Pavement Rehab – Mar 23*



# 1. SUMMARY

March was a very productive month for the Ventia Puketona Maintenance team.

The sealing crew have come to the end of the reseals for the first year of resourcing these works with our own team. The reseals were completed on 23<sup>rd</sup> March before the required deadline of 31<sup>st</sup> March. A great achievement considering the weather over “summer”. We are looking forward to next season already.

Asphalt resurfacing was carried out on the Heritage Bypass with a fresh lick of line marking to complete the job. All that is left on the asphalt list this season is Tau Henare Dr over in Waitangi which is a one day shift due to be completed in April.

In sealed pavement land Waimate North Rd rehab was completed. The keen eye would have noticed a realignment has taken place through here to improve the ride for the driver and make it safer at the same time. The road has straightened by 1m approximately at the tangent. After completing Waimate North, the crew jumped onto Ngapipito Rd rehab and have been working on the associated works this side of winter – water tabling, subsoils, culvert installation with the overlay and sealing to start in September. Another team was on Waimate North carrying out pavement dig outs and stabilisation prior to resealing later in the month.

A couple of unsealed short sections of unsealed pavements have been replenished this month as the start of the overlay list commences. See down in section 9 for the list of sites being overlaid over the next 3 months.

Grading on the unsealed network has been quiet this month due to the dry conditions with our unsealed patrol filling the gap where grading isn't possible. Routine crews have very little on their tablets after a big push and placing two crews on each activity to catch up on the Cyclone back log.

The footpath renewals continued around Kerikeri in March with the team moving into Moerewa next. A bunch of vegetation/footpath debris was cleared from paths around the Hokianga Ward also.

Northland Treeworks are continuing with the debris/tree clean up post storm. All roads are open, and they have 19 left on their list to run back to still. We expect NTW will be keep chipping away at this for a few more weeks at least.



You would have noticed nice new line marking around the place in March with Coastline Markers Type B crew painting all intersections, medians, pedestrian crossings. We are waiting on confirmation on the centre line marking, this may occur in April, and you won't miss it once done.

Our vegetation contractor spent a lot of time out West running around after the storm using their vertical reach mower to knock back vegetation that has been pushed into the envelope after the storm. We have found this method a lot more efficient than having a crew hand cut each limb and dispose like previous events. They are now rolling into more routine works of maintaining the envelope heading into the wet months where the trees start to droop.

In April the sump clearing annual round commences.

Enjoy your Easter this weekend.

Nga Mihi

Jamie





## 2. WORK PROGRAMME

A total of 1,117 individual work items were completed throughout the month of February, of which 975 were routine find and fix issues, 0 cyclic or annual rounds, 58 were programmed works, 12 renewal / capital project, and 72 were callouts or emergency response works.

April 2023 forward works programme has been submitted in RAMM.

## 3. ROUTINE WORKS COMPLETED

Routine maintenance activities completed in March:

- 59 sealed potholes repaired.
- 198 unsealed potholes repaired.
- 42.6km of unsealed roads graded equating to 5% of the total unsealed network.  
*(As Winter approaches more moisture in our pavements will allow regular grading to resume)*

## 4. DRAINAGE MAINTENANCE & RENEWALS

Drainage maintenance activities completed in March:

- 30m of heavy water tabling (as part of culvert installations)
- 0m of water table reconstruct/scouring.
- 48m Culvert pipes replaced/new.
- 2 Culverts flushed.

Another busy month for the culvert team with the focus being around the Oromahoe/McIntyre area for most of the month.

Oromahoe Rd RP7928. Out with the old in with the new. Daylight can be seen again. A badly shifted culvert replaced. Left (Before), Right (After)





Purerua Rd RP14400 – Installation of new culvert, inlet headwall and daylighting into the paddock.



## 5. ROUTINE INSPECTION REPORT

Our 3 inspectors resumed routinely scheduled inspections mid-month following Gabrielle and have been working through these as they are generated. At 31/03/23 all inspections for March were on time.

### **Sealed:**

There are currently 0 sealed inspections running overdue.

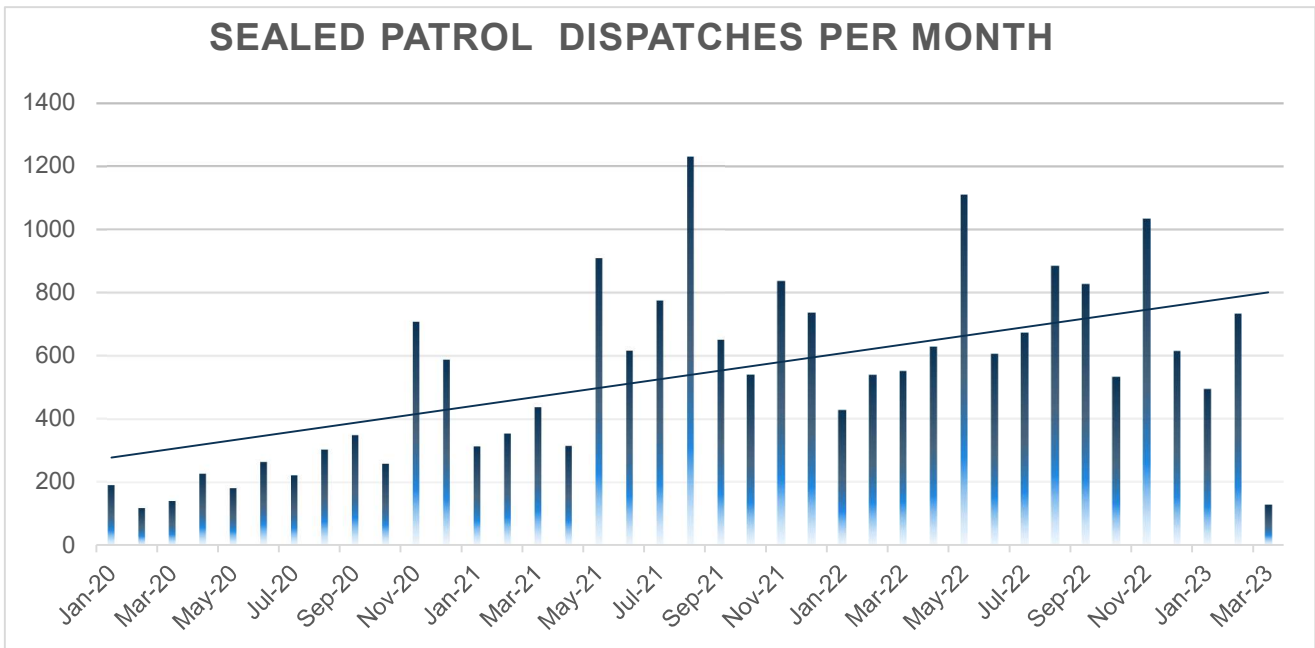
### **Unsealed:**

There are currently 0 un-sealed inspections running overdue.

### **Drainage**

There are currently 0 drainage inspections running overdue.

Something of interest in recent analysis of routine patrol dispatches is the sealed network activities being carried out. With so many weather events causing additional work in the last year it has meant more debris clearing (sweeping), potholes, leaning edge marker posts, vegetation removal. Moving from 300 jobs a month to 800 in a 3-year period.



## 6. EMERGENCY WORKS

A busy month, still responding to storm damage works including tree damage and under slips.

We had beautiful weather this month with only 29mm of rain.

The sweeper truck from Safetrak has continued for over 4 weeks now. Twice as long as a routine sweeping round and has just finished on 29/3/23. There was a lot of debris!!!

## 7. ORDERED WORKS

Most of the ordered works this month were just clean up type jobs but some significant works were completed on Waimate North Rd. Dig outs and stabilised patches completed on a section of road that was significantly failing.

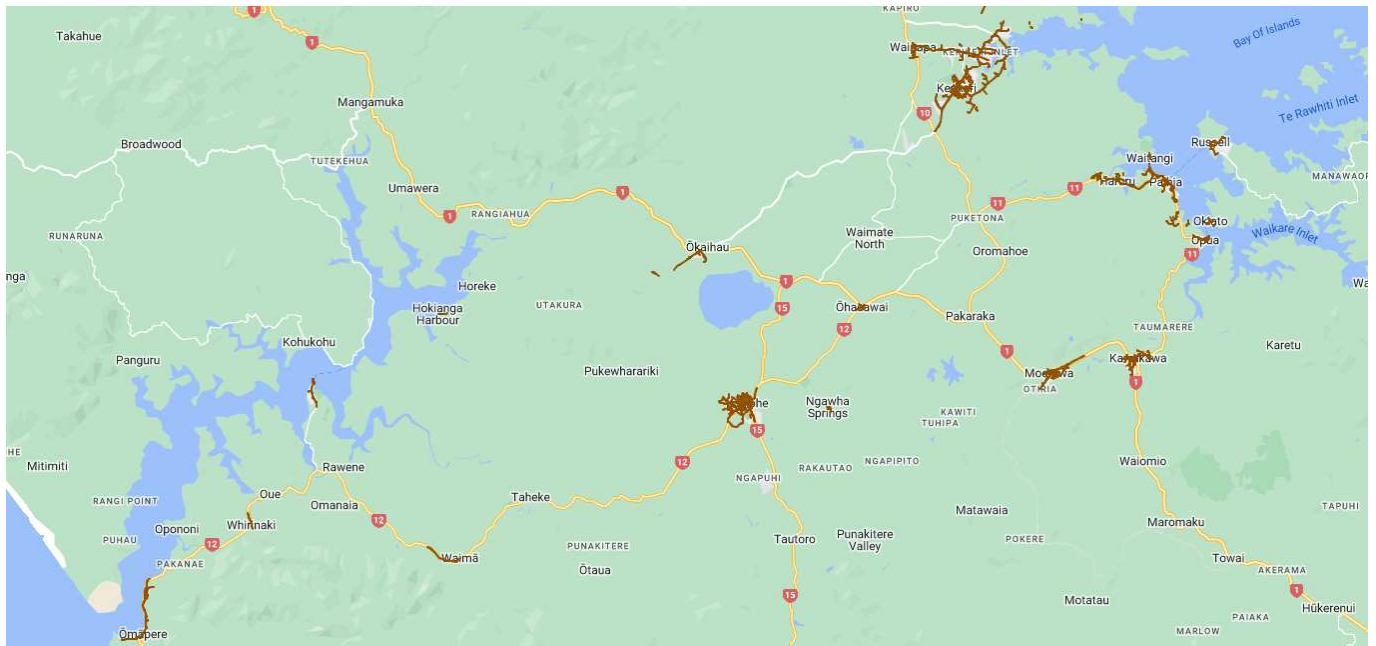
Also trailed edge break repairs with basecourse build up then sealing over rather than the less permanent method which is plant mixing.





## 8. FOOTPATH MAINTENANCE/RENEWALS

Within the FNDC South Maintenance contract, we look after maintenance and renewals for: 99.3km of paths in the Eastern Ward and 46.1km of paths in the Western Ward. This includes paths on the State Highway network and excludes the cycle trial.



So far, this financial year we have been focussing on the East first with the West next on our list. Noting the budget allocation split is 50/50 in value despite the East having 50% more paths.



We carried out a lot of grinding on trip hazards across the network, in particular a large job at Tii each in Paihia. The concrete team has been working on renewals in Kerikeri. While at present the footpath team is in the BOI ward, we have been carrying out maintenance activities in Omapere and Kaikohe recently around vegetation and debris. Some pictures showing completed path sweeping out West.



Footpath trip hazard repairs along Te Karuwha Parade. Cobbles have sunken so rather than remove and reinstate to have them settle again an alternative was carried out involving quick patch epoxy mortar repairs. Note the colour will fade in time and blend in.



## 9. ROAD FURNITURE ACTIVITY

- 44 new signs installed or replaced (damaged or missing)
- 21 signposts replaced/new.
- 38 signs re-erected or straightened.
- 48 signs/posts cleaned.
- 33 posts painted.

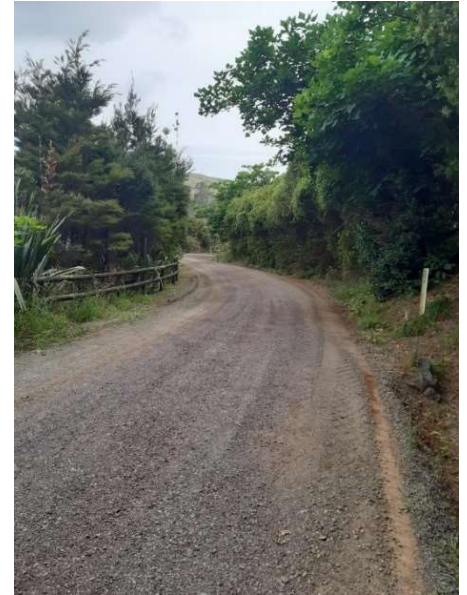




## 10. UNSEALED NETWORK

The good weather meant we needed to pull back our grading almost to halt, only grading any major defects/scours and potholes where the pavement allowed. The dry weather makes it hard to grade as there is no moisture present meaning the pavement is hard like concrete and any loose material won't bind back together. With more moisture likely to be present in April with dropping temperatures, we should be able to get grading underway to some degree.

Approximately 1231m<sup>3</sup> of running course was applied to numerous roads across the network including Roger Rd, Montrose Rd, Curtis Rd, Ngawhitu Rd, Wellsford Rd and Punakitere Rd.



*Takou Bay Rd – Running Course*

Below is a list of sites that are programmed to be completed over the next 3 months as part of the unsealed pavement rehabilitation programme.

ORIRA ROAD	1191	3800
MANGAKARETU ROAD	3850	5555
REMUERA SETTLEMENT ROAD	470	3870
TAITA ROAD	52	3065
WHARAU ROAD	2133	4684
MILL ROAD	331	4400
WALLIS ROAD	0	1200
DUDDY ROAD	880	3200
OKAKA ROAD	0	2014
WAKELIN ROAD	56	1500
SETTLEMENT ROAD	519	1850
KUPA ROAD	222	1631
WAIARE ROAD	24592	25861
MANGAPUPU ROAD	0	2029
JAMIESON ROAD (RAWENE)	0	393
HAPPY VALLEY ROAD	1700	1951



## 11. PAVEMENT REHABILITATIONS

Waimate North Road was stabilised and sealed late Feb and line marking followed through. The team have moved to Ngapipito Road Rehab and will continue with drainage works (Culverts, Manholes, and subsoils) for the next 3 weeks. The team moves back onsite after winter to commence with shoulder checkouts and overlay.

### Waimate North Rd





## Ngapipito Rd

The team are laying over 2060m of subsoils along this rehab and came up with a great innovation. Using a bobcat to load the drainage material in rather than larger machinery like a loader or digger. This has greatly improved productivities and safety around the machinery.





## 12. RESURFACING

With summer finally arriving in March the Ventia Sealing Crew put together a huge final push to complete the remaining 13.5km of reseals for the 2022/2023 season by 29 March 2023.

### Statistics and numbers for Ventia for the 2022/2023 Reseal Season

- 35km = Total Length of Reseals completed
- 245,755 m<sup>2</sup> = Total Area of Reseals completed
- 68 Dispatches = Total number of sites sealed
- 40 days = Total number of Resealing days worked
- 8,160 Hours = Total Man/Woman Hours worked
- 500,000 Litres = Total Litres of Hot Bitumen sprayed
- 62.5 Loads = Total number of times the Bitumen Sprayer emptied (Sprayed out a full load)
- 4718 m<sup>3</sup> = Total m<sup>3</sup> of Sealing Aggregate spread

### Improvements to the network.

This is an example of the benefits to resurfacing our local roads. The Macro Texture (road surface texture) on Waimate North Road has improved due to the elimination of the existing flushing.

### **Dispatch # 125021 – Waimate North Road (Outside Spring Bank School)**



***BEFORE Photo (Taken at Preseal Inspection)***



***AFTER Photo (Taken after Resealing)***



### Sites Deferred to 2023/2024 Season.

Due to weather conditions/storm damage the following Reseal sites that have been deferred to the 2023/2024 Reseal Season.

Programme Month	Dispatch ID	Road	Start	End	Length
		<b>Deferred to 2023/2024 Season</b>			
2023/2024	124968	KERIKERI ROAD	76	650	574
2023/2024	124969	KERIKERI ROAD	1100	1430	330
2023/2024	124970	KERIKERI ROAD	1660	2282	622
2023/2024	124971	KERIKERI ROAD	2282	2515	233
2023/2024	124981	NGAPIPITO ROAD	1300	1800	500
2023/2024	124982	NGAPIPITO ROAD	3000	3500	500
2023/2024	124983	NGAPIPITO ROAD	3500	4144	644
2023/2024	124984	NGAPIPITO ROAD	4144	7790	3646
2023/2024	124985	NGAPIPITO ROAD	7790	8460	670
2023/2024	124989	OMANAIA ROAD	4278	4523	245
2023/2024	124991	OMANAIA SCHOOL ROAD	0	183	183

### Reason's for deferring to next season.

**Kerikeri Rd** – Deferred to February 2024 due to poor summer temperatures.

Proposed Treatment on Kerikeri Rd = Grade 2/4 with Polymer Modified Binder (PMB), and to be resealed during Night Works. PMB needs to be sprayed in the peak of the summer (when temperatures are at their highest) and with the low overnight temperatures experienced in February 2023 the potential risk for PMB Reseals to strip/fall off were too high.

**Ngapipito Rd** – Deferred to October 23 due to large culvert replacement taking place at end of March after being deferred 4 times previously thanks to unsuitable weather conditions along with our sealed pavement rehabilitation tying into the second coat seal, we have chosen to hold off sealing the last site for 5 months to ensure the best for network approach remains the priority rather than just spray and walk away. **Omanaia Rd** and **Omanaia School Rd** – Deferred to 2023/2024 due to budgetary restraints and new failures appearing following the Cyclone Gabriel.

Site 1 of 2 Asphalt sites was completed in March on Heritage Bypass Rd. Site 2 is booked for April on Tau Henare Dr, a single shift job then all Resurfacing will be completed for the season.





## 13. ROAD ACCIDENT REPORT

There was an accident on Waimate North Rd during March on our unattended stabilisation site. A car unfortunately lost control outside of our patch on material that was already there prior to us turning up and the car landed up on its roof. No one was injured. We are working on some improvements around Generic TMP checks as a learning internally to ensure although the site was 100% compliant and the person was to be found at fault, we didn't have all the paperwork 100% in the background.

There was also a large transporter attempting to navigate Waikare Rd, in the process getting stuck on one of the very tight bends. Even hard to get around in a Ute at times. We set up a temporary closure for 3 hours and luckily the crane managed to get the transporter and brand-new digger back on the road safely.

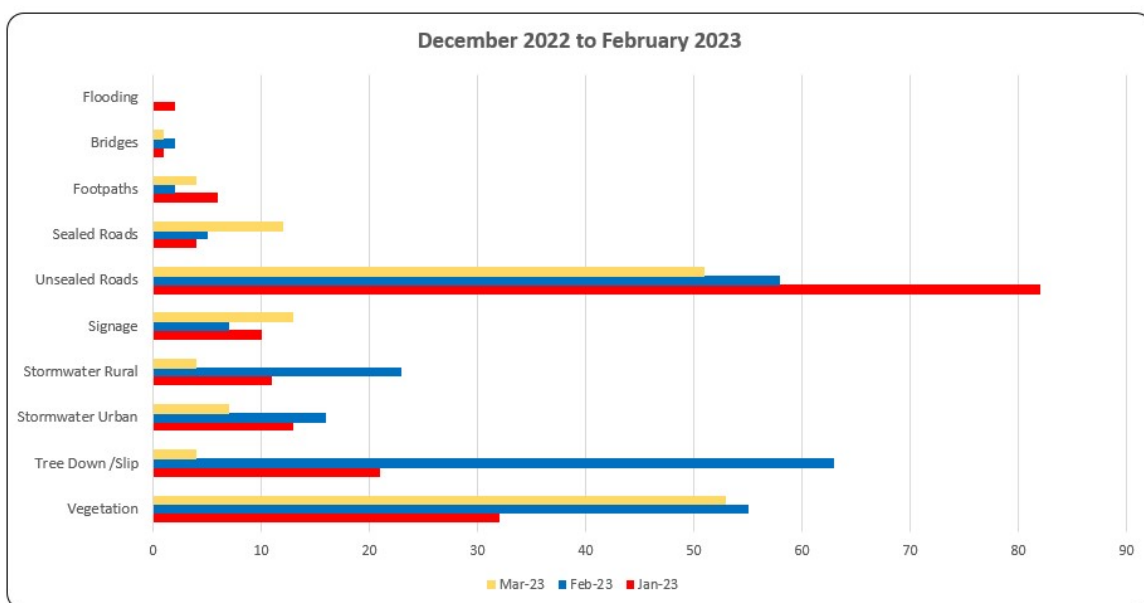


## 14. CUSTOMER SERVICE ISSUES / COMPLAINTS

A much more manageable number of customer requests this month with vegetation surpassing unsealed roads for the second month in a row. This is very rare and highlights the damage further from Gabrielle.

Number of RFS's

Month	Vegetation	Tree Down /Slip	Stormwater Urban	Stormwater Rural	Signage	Unsealed Roads	Sealed Roads	Footpaths	Bridges	Flooding	Total
Jan-23	32	21	13	11	10	82	4	6	1	2	182
Feb-23	55	63	16	23	7	58	5	2	2		231
Mar-23	53	4	7	4	13	51	12	4	1		149





## 15. RAMM ISSUES



All Team members are continuing to operate the latest Production release. Any development issues encountered system are being recorded to provide feedback to Think project. No major issues this month with the system. SQL access has been discussed with the NTA team & Ventia, new procedure to be reviewed and implemented.

## 16. COMPLIMENTS

1: Subject: RFS 4152277 – Compliment – Street Sweeper

*Kelly our streets in Moerewa have been swept lately by like a hydro sweeper and I don't know who to send this to but THANK YOU SO SO SO SO SO MUCH!!!! This has been something I've been asking for ages!!!*

*In a place where we feel consistently undervalued this type of action makes us feel valued and cared for.*

*Thank you!!!*



Editor's note: The whole network receives two channel sweeps per year with a 3<sup>rd</sup> non planned sweep just completed post Cyclone Gabrielle in all areas. No area receives more of less than the other in FNDC South 😊

## 17. HEALTH & SAFETY

We have unfortunately had our first lost time injury (LTI) in a very long time this month. See below for the safety alert. The injured person (IP) was back at work after one day off, on light duties and was back to full working capacity in a week once the muscles relaxed.



*Ngapipito Rd – Pre commencement Korero.*



# SHEQ ALERT

## LESSONS LEARNED



### Manual Handling activity resulting in Lost Time Injury (LTI)

Alert No: 2023.03.09-01

<b>Date of Incident</b>	09/03/2023	<b>Event Number</b>	VEN-EVT-10717
<b>Location</b>	Kawakawa NZ	<b>Classification Actual</b>	Moderate
<b>Project / Site</b>	Puketona Maintenance	<b>Classification Potential</b>	Moderate
<b>Sector</b>	Puketona	<b>Contact Name</b>	Viki Hurring
<b>Business Unit</b>	NZ Transport	<b>Contact Number</b>	027 231 5674
<b>SHEQ Alert No</b>	2023.03.09-01	<b>Contact Email</b>	Viki.hurring@ventia.com

#### What happened?

A three person crew were tasked to clear silt and vegetation material from a kerb and channel.

The crew decided to change the conventional work method and transferred dense materials onto the UTE tray by filling a garden bag, instead of shoveling smaller loads.

Once the bag was filled to approximately 40/50kg (estimated weight) the two crew members manually lifted the bag from ground level and place it on the tray of the ute (935mm high). It was during this two person lift that the IP felt some discomfort in his lower back.

The IP was instructed to stop work and take a rest, however, the pain increased. The IP was seated in his ute when his condition changed, experiencing greater pain and felt numbness down his left side.

The crew notified St John Ambulances service, who were located across the road. Shortly after, an ambulance was dispatched where paramedics assessed the IP and administered temporary pain relief and transferred to the local hospital.

The IP was released the same day, ordered to rest for 3 days and given medication to relieve pain and inflammation for, lumber and left lower gluteal muscle strain/sprain.



#### What are the lessons learned?

- Change of process/methodology occurred – The crew made a decision to use the garden bag. Normal practice of shovelling the material straight on to the back of the ute changed.
- No Ventia approved process on safe use of these bags.
- The crew had verbally discussed the risks but did not document the controls on their Jobstart/Startcard.
- Although Ventia have a formal 'Start the Day the Ventia Way' stretching program there was no onsite stretching conducted by the team before manual activities took place - (also a cooler morning than normal)

#### What were the immediate controls put in place to mitigate the risk?

- Immediate review of all work vehicles to ensure what items are being lifted onto work vehicles to prevent a recurrence.
- Safety Circle Meeting with Management occurred the following day.
- Investigation underway to understand what went wrong and how we can prevent recurrence.
- Immediate implementation of work crew review of the Ventia Start Card, refer to extract below:





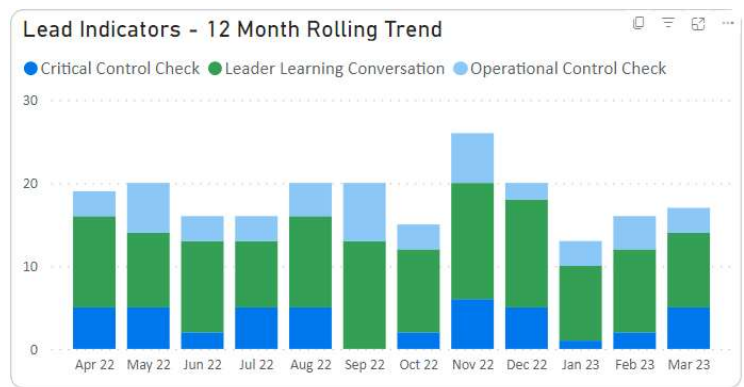
Go / No go	
One <b>YES</b> requires additional controls. If more than one <b>YES</b> contact Supervisor/Leader to manage unacceptable risk.	
1. Any new or inexperienced workers who require additional supervision?	Yes <input type="checkbox"/> No <input type="checkbox"/>
2. Any equipment that is not fit for purpose or is not in good working order?	Yes <input type="checkbox"/> No <input type="checkbox"/>
3. Has anything changed or likely to change from original task plans?	Yes <input type="checkbox"/> No <input type="checkbox"/>

- Withdrew garden bags from Operations ensuring future risk is eliminated.
- Temp worker pre-work medicals fitness for work process improvement
- Consider eliminating the risks by using plant to clear kerb & channel where heavy loads are required to be removed
- Improve scoping and planning of work to identify the right skills, plant or equipment to deliver the works

### Relevant documentation / resources

- Manage SHEQ Risks Process
- Manual Handling Work Instruction
- Ventia Start Card

Graph showing our leadership commitment scores for March. We achieved the target for the month set by management.



See attached for the HSE stats for the month.

Leading Indicators Achieved			
Leading Indicators	Target	Actual	To Go
Leader Learning Conversation	7	9	-2
Critical Control Check	2	5	-3
Operational Control Check	8	3	5
<b>Total</b>	<b>17</b>	<b>17</b>	<b>0</b>

## 18. TRAINING

Quite month on the training front, being a summer month training is generally on the slower side. Working at Heights training was completed for two staff members, and we have had 5 new team members start requiring TTM training. This was held by David and Shannon our two recently confirmed TTM Mentors in house, yes, we have inhouse mentors! How good.

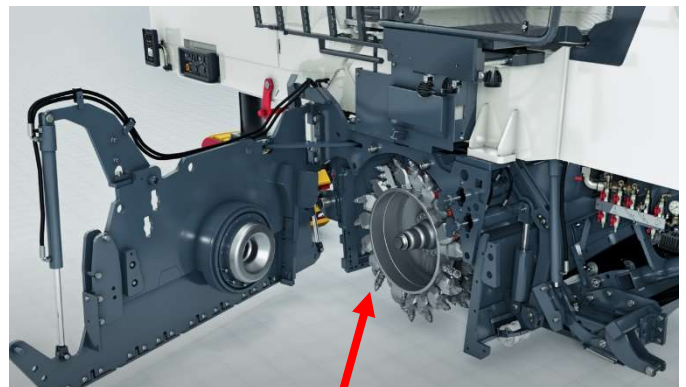


## 19. ENVIRONMENT

In March we had no notifiable incidents to report.

On Heritage Bypass 650tn of 15-year-old asphalt was milled out and replaced as mentioned further up in this report. From a **sustainability** point of view milling out that much material and just throwing it in a cleanfill or landfill is not ideal. We have found it to be very useful to repurpose on private driveways or races in the past and have a few ideas around bridge approach infilling that we would like to trial instead of spending money on chip sealing and requiring more maintenance long term. But in the meantime, some of the material is going to be used on Waimate North Rd in the deep swale at SH10 end in the next month. It has good binding properties on slopes and hardens up over time as the bitumen reactivates a little bit to glue it back together after compacting. Photos to come of this in April.

Below thanks to my boys Boston and Tommi for modelling is a miller (road profiler) tooth. These are on the drum of the conveyor machine also pictured. The tip is made of Tungsten Carbide as the road profiler drum spins at between 150-250 revs per minute destroying what's in its path. A seriously cool bit of kit.





## 20. SMALL TO MEDIUM ENTERPRISE (SME) BUSINESS ENGAGEMENT

The table demonstrates the level of financial support Ventia has given the Northland District through the maintenance contract in its fourth year through small to medium local enterprises. Last year's figure was 43% local (now 49%) with a reduction in local labour hire due to additional roles being invested within the branch (was \$704,624.00 now \$387,528). Overall, an increase year on year investing locally.

Measurement	Qty
Local Contractor component of work	49%
Internal salaries and wages (Generally invested back to local communities)	\$3,122,576.79
Local labour hire wages	\$ 387,528.53
Other internal local market expenditure e.g., local supplier purchases etc. Includes local Ventia Quarry purchases	\$ 6,839,454.22

## 21. ANNUAL ROUTINE ACTIVITY ACHIEVEMENT

Routine and cyclic rounds start at the financial year (July 2022/23):

<b>Biennial Painting of All Rails</b>	<b>0%</b> completed - on hold due to funding.
<b>Biennial Parapet Painting of Bridges</b>	<b>0%</b> completed - on hold due to funding.
<b>Annual Cleaning of EMP's</b>	<b>33%</b> completed.
<b>Annual Sucking of All Sumps</b>	<b>0%</b> completed – To commence in Apr 2023
<b>Biannual sweeping</b>	<b>0%</b> completed – Round 2 to commence later than usual as the sweeper is on storm clearing now.
<b>Urban Vegetation Spraying</b>	<b>0%</b> completed – 2nd round to commence Apr 23
<b>Rural Vegetation Spraying</b>	<b>0%</b> completed – 2nd round to commence Apr 23



## 22. OTHER WORK IN PROGRESS

The Construction team stayed on course with the delivery of our projects as per below:

1. Hall Road Upgrade – Arvida – Practical completion on this project have now been achieved with only the line marking to be completed in the first week of April. We received a lot of praise and thanks from all the residents and client alike. The road had been widened and sealed to a 6.5m sealed width and is a big plus for the Hall Road residents and Kerikeri community.



2. Pokapu Road Bridge Construction – the team are excited to be a part of this project and we started with the piling works on the 16<sup>th</sup> of January. The piling is  $\frac{3}{4}$  complete with Abutment D and Pier C and B Piles poured. The bridge approaches have also been formed with the hard fill on both the North and south sides now in. Still a few months to go on the project. The bridge concrete structure will go up over the next few months before we start with the pavement realignment in August 2023. Watch this space for some photos.



3. Cycle Trail, Whangae – Oromahoe - Opua – Work on this cycle trail have been a bit stop start with the wild weather lately, we boxed on and are now in the final stages with the fencing going up. Yet another exiting project to be a part of and a welcomed new and adventurous cycle trail for the community to enjoy.



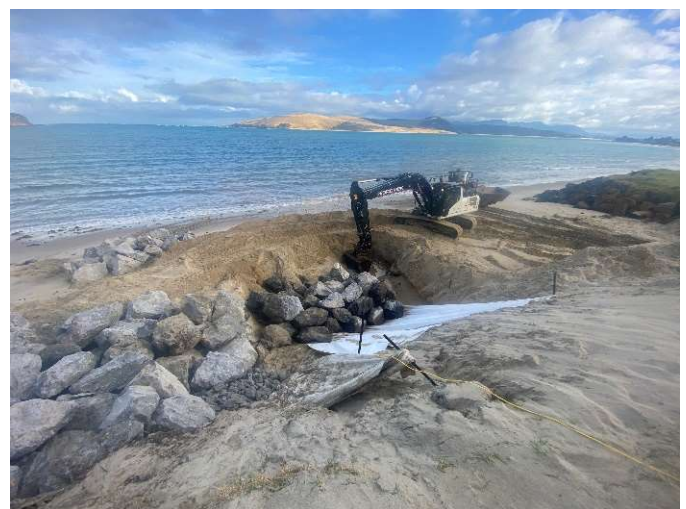
4. Tahuna Road, Kaitaia – the team have worked on this road slip repair in Kaitaia. The road and driveway slipped into the stream, and we have used Geogrid to create a steep batter and reinstated the road and driveway by wrapping the Geogrid in layers with GAP65 hardfill. Installed some positive drainage and gave access back to the residents.



5. Cycle Trail tunnel overpass – We have been engaged to repair the surface of the tunnel overpass on the Twin coast cycle trail. We had to clear a big over slip from the track before we can start with the installation of wooden gates in front of the tunnel to prevent people from cycling through the tunnel.



6. Freese Park- Seawall – Construction team are doing a 120m seawall construction on Freese Park in Omapere. Seawall is 80% completed with Redirock blocks to place in the next 2 weeks.





## 23. COMMUNITY SUPPORT

It's the small things that count. Keith Kent at the NTA dropped us an email for a price for line marking 15m of no parking lines at the Kerikeri Kindergarten on Hone Heke Rd. Once we realised it was for the community, we said don't worry about it and got it done at our expense.



Nga Mihi

Jamie Kitzen

Contract Manager – FNDC South Maintenance Ventia (NZ) Ltd