

C:\Users\lworthington\OneDrive - The Property Group Limited\Client\Far North District Council\000000\_FNDC Horticulture Zone Analysis\000000\_FNDC



Contains data sourced from LINZ Data Service licenced for reuse under CC BY 4.0, including imagery and property boundaries. Property boundaries accuracy: +/-1m in urban areas, +/-30m in rural areas. Datum: NZGD 2000 Coordinate System: NZGD 2000 New Zealand Transverse Mercator This map was produced with ArcGIS Pro (Esri).

**Recommended Extent of Horticulture Precinct**  
**Figure 1**



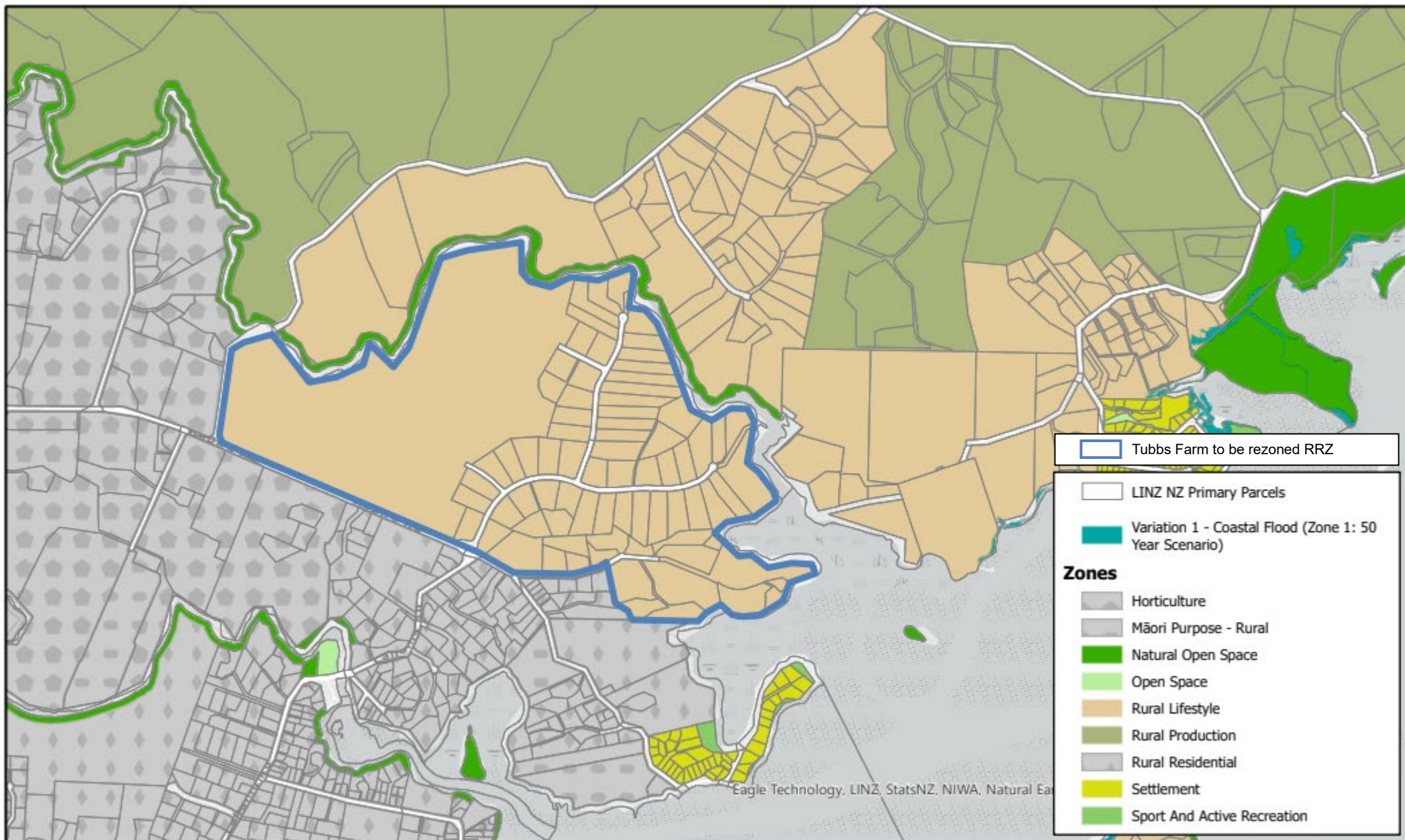
IMAGERY SOURCE **LINZ Data Services**

TPG REF 000000 DATE 27/08/2025 SHEET 1 OF 1

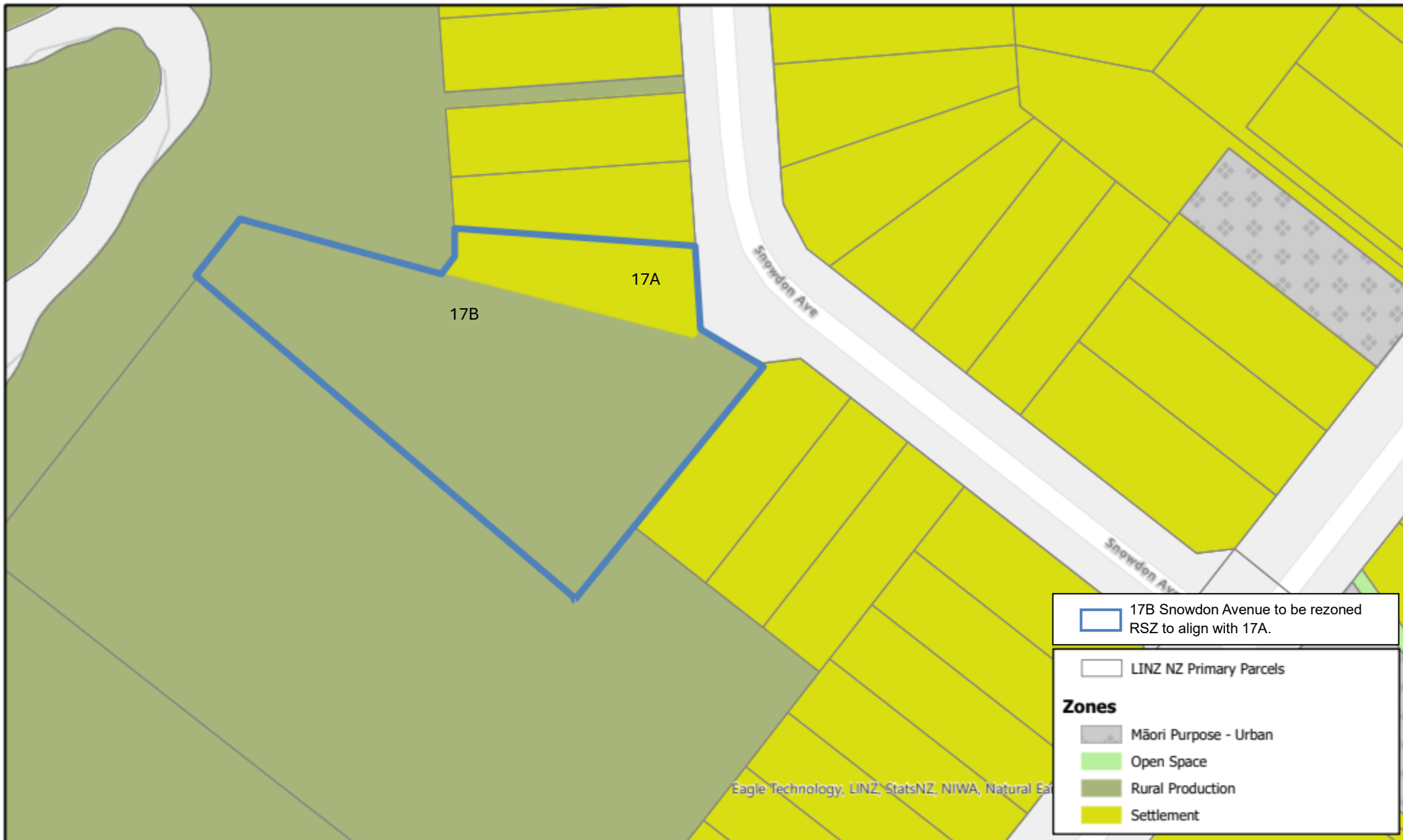
PREPARED BY Louis Worthington

A3 Scale 1:47,500

0 1,100 Metres



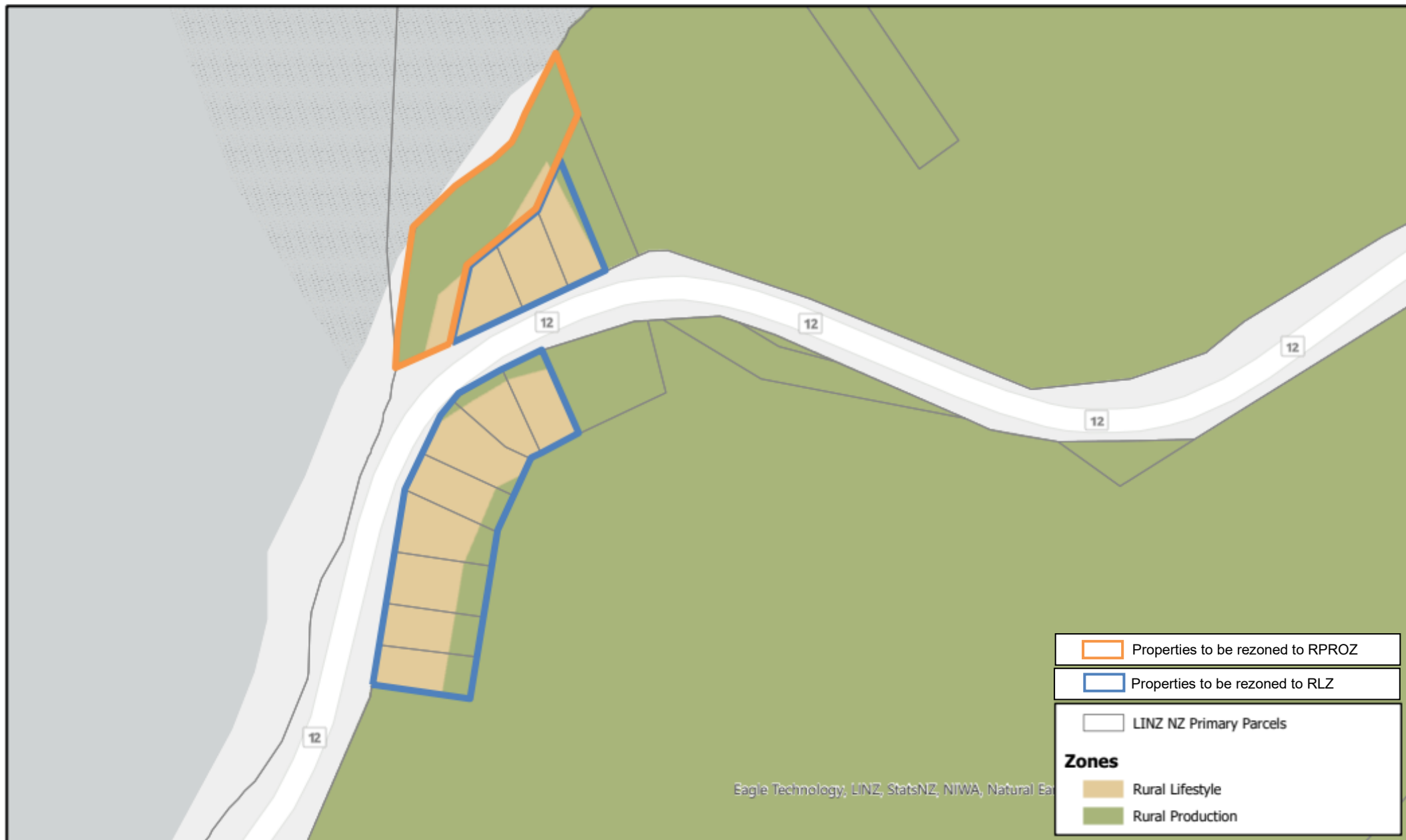




**DISCLAIMER:**

While the Far North District Council strives to keep the data in this service current, it may not be the most recent or most accurate data available. No reliance on the information contained on this map by any person is permitted. FNDC will not be liable for any omissions or errors of information contained on this map. FNDC recommends that persons seek specific advice on individual properties from FNDC and other specialist organisations which may hold more up to date or accurate information.





**DISCLAIMER:**

While the Far North District Council strives to keep the data in this service current, it may not be the most recent or most accurate data available. No reliance on the information contained on this map by any person is permitted. FNDC will not be liable for any omissions or errors of information contained on this map. FNDC recommends that persons seek specific advice on individual properties from FNDC and other specialist organisations which may hold more up to date or accurate information.

