

Waitangi

Submission on FNDC
proposed district plan
Evidence of Ben Dalton

7 August 2024

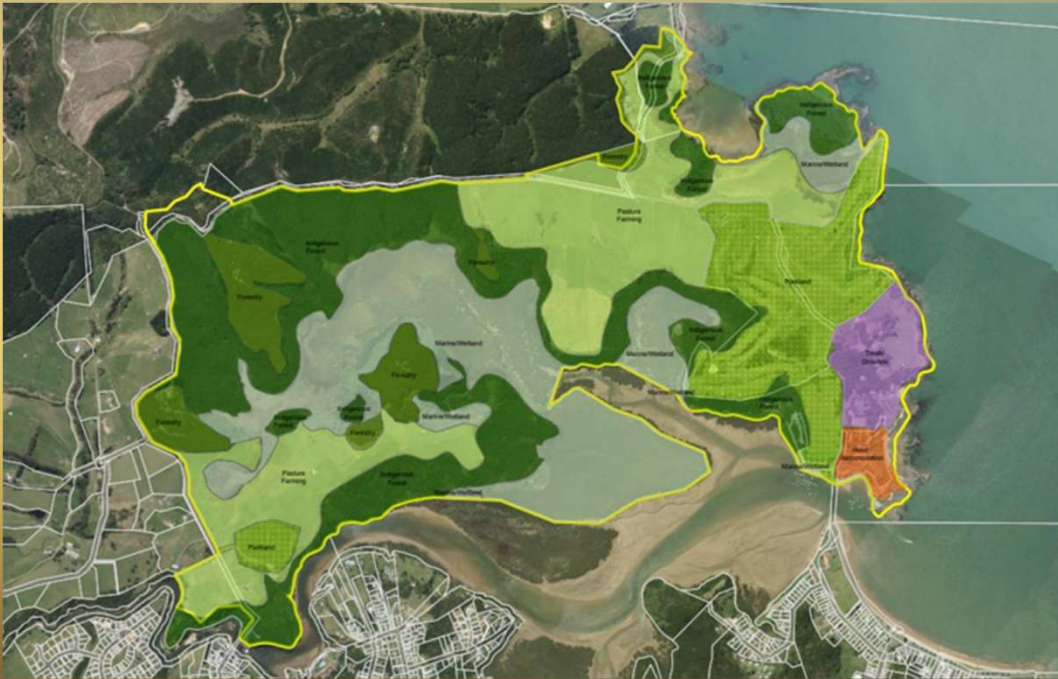
Introduction



My statement of evidence covers the following points:

1. Waitangi National Trust Estate is of national significance
2. It is administered and managed under its own national level legislation and governance arrangements
3. There are a wide range of activities that take place at Waitangi Estate
4. The provisions in the proposed district plan are going to make it difficult for us to meet our mandate
5. This is why we are seeking a special purpose zone for the Waitangi Estate.

What is the Waitangi National Trust Estate?



- Waitangi National Trust Estate (the Estate) is 506 hectares, located to the north of Paihia and inland to the Haruru Falls.
- It includes the Waitangi Treaty Grounds (Treaty Grounds) which 4.8 hectares.
- It is the pre-eminent heritage place in New Zealand of significance to all New Zealanders.
- It is a site of significance for Ngāpuhi-nui-tonu.
- It is a potential World Heritage site and is on New Zealand's tentative list for World Heritage sites.

Waitangi is a site of national significance



- Waitangi is regarded as the birthplace of the nation – Te Pito o te whenua
- Site of the signing of the Declaration of Independence / He Whakaputanga in 1835 and the Treaty of Waitangi / Te Tiriti o Waitangi) in 1840
- The centennial of the signing of Te Tiriti in 1840
- The site of annual national commemorations of the signing of Te Tiriti. Last year we hosted 60,000 people on Waitangi Day alone.
- The Treaty Grounds includes several key nationally significant heritage features: The Treaty House (1834); Te Whare Runanga (1940); Ngatokimatawhaorua (1940).
- Purchased by Lord and Lady Bledisloe in 1932 and gifted to the nation.

Waitangi National Trust Board Act 1932

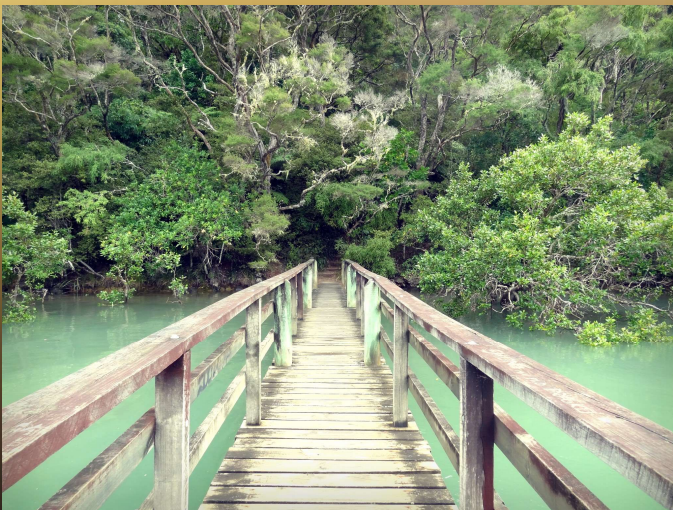
- The Waitangi Estate (including the Treaty Grounds) are governed under our own bespoke legislation which vests the lands in the **Waitangi National Trust Board (the Board)** and provides for the Board to administer the Estate with the power to make bylaws.
- The Board is required to maintain the Estate as a *place of historic interest, recreation, enjoyment and benefit in perpetuity to the inhabitants of New Zealand*.
- **Waitangi Limited** is the company owned by the Board.
- Waitangi Limited maintains and operates all activities on the Estate on behalf of the Trust Board. to oversee all operations on the Estate
- We employ 82 full-time staff



Wide range of activities on Waitangi Estate

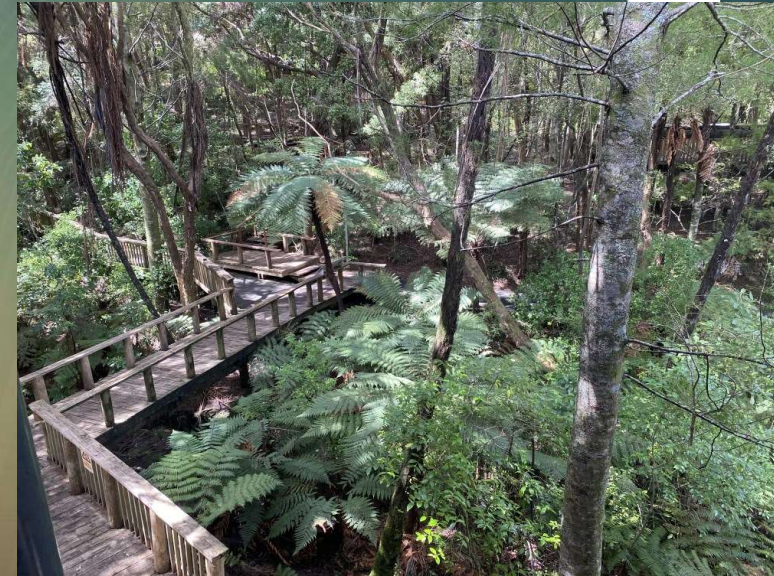


- Waitangi Treaty Grounds is the number one visitor attraction in Taitokerau
- Conference centre and hospitality
- Copthorne Hotel
- 2 award winning museums
- Education and cultural experiences for schools
- Waitangi River to Haruru Falls walking track (6km)
- Sports facilities (Golf Club, Boat Club, Football and Rugby at Bledisloe Domain, Cruise Ship wharf, Recreational boat ramp),
- Pastoral farming.



What we need to do

- Maintaining Estate, landscapes and visitor tracks
- Maintain and protect heritage buildings and taonga
- Rubbish removal and predator control
- Host and manage significant public events
- Planting and environmental protection and predator control
- Traffic control, roading and parking
- Operate significant summer visitor activities (night-time attractions)
- Security and safe public access



Planning for Waitangi 2040



- Waitangi will host two of our nation's bicentenary events in 2035 and 2040.
- As with the centenary in 1940, Waitangi was focal point for national events, including the construction of new monuments and buildings.
- Planning for these bicentennial events has already commenced with government
- We will be working with key stakeholders including manawhenua to develop a masterplan for the Estate for 2040 and beyond.
- Having the ability to support the masterplan with a set of integrated planning provisions via a special purpose zone will be key to the success of implementing our masterplan and the commemorative events which will be the largest ever to be hosted in Taitokerau.



<https://www.youtube.com/watch?v=8wAHiQe9bG0>

 WAITANGI
TREATY GROUNDS

Ngā Mihi.