

TRANSPORTATION UPDATE:

January 2024

In a partnership of the four Northland Council's 'roading and transport departments', combining and co-locating the individual council staff and resources, the NTA works as part of Council to collectively create better, safer, and more accessible journeys across the district (and region) through structured maintenance and improvements in accordance with national safety and engineering standards, policies and guidelines.

EXECUTIVE SUMMARY

Far North REAP (Rural Education Activities Programme) continued their work delivering Far North's Road Safety Education Programme, with highlight for January being the continued promotion of the "Patience to Paradise" campaign, including summer "pop-up event at three Far North beach locations.

\$32.751M of FNDC transport programme works were completed in the first six months of the 2023/24 financial year, being a 33% increase on the \$24.602M of works completed in the equivalent period of the previous year. 85% of subsidised expenditure year to date relate to the three core activities of Renewals (34%), Maintenance & Operations (30%) and Emergency Works (21%)

Capital Works programme activities continued with the improved weather seeing pavement works and other activities progressing well. A full list of 2023/24 individual projects with their respective delivery and risk status is provided within this report.

With the dryer months now here the grading activities have reduce significantly (171km/10.6% of unsealed network completed in January) with a maintenance focus on network wide pothole repairs, culvert replacements and culvert end clearing/flushing, edge marker post replacement, roadside mowing and spraying, edge break /shoulder repairs, dig outs and stabilised patches and sweeping. Centreline and edge line remarking activities continued across the northern contract area.

Planning and programming activities are underway for August 2022 and May 2023 Storm Event sites previously assessed as complex, but subsequently confirmed through the Emergency Works Assessment (EWA) process as lower complexity Phase 2 repairs. These are presently scheduled to be completed by the end of the current financial year (30th June 2024)

As reported last month, there are 38 confirmed Phase 3 (Complex sites) to be completed as part of the multi-year recovery programme with full detail on progress and list of individual sites provided on pages 12 and 13 of this report.

110 new Corridor Access Requests received for works in the road reserve across Far North District in January, with this significant volume increase (approximately 50% higher than average) due to an unusually high number (50%) of applications received from one applicant undertaking a project across the Far North to test the soil composition for lithium.

The Hokianga Ferry service carried a daily average of 701 passengers and 330 vehicles in January 2024, with revenue for the month comparable to January 2023. The schedule departures were 97.1% on time for the month, with 202 shuttling's and 4 after hours charters.

There has been a spike in the volume received during January with 494 requests received (100 requests more than the month prior). At the end of January, there were 520 open requests, being an 15% increase from the prior month.

ROAD SAFETY EDUCATION PROGRAM

[Far North REAP](#) (Rural Education Activities Programme) are contracted to deliver Council’s Road Safety Education programmes across the Far North District. Key activities undertaken in January included:

- Patience to Paradise – Summer Pop Ups. Discussion with people at three different beach locations on where they have travelled from, how they found the journey, what Patience to Paradise means to them (Taupō Bay, Cable Bay and Ahipara).
- Alcohol Breathalyser (wall mount at Awanui pub and handheld at Kaitaia Returned and Services Association) – public survey introduction to staff. Confirmation of way to obtain public and staff feedback.
- Meeting with Far North District Licensing Group (District Health Board, Police, Liquor Licensing Inspector) – discussion on pre-event party planning and sober driver options for the Mangōnui Waterfront Festival.
- Marae based Touch Tournament in Hokianga: Competition and promotion/resources (One Tear Too Many & Patience to Paradise).
- Pauerenga Horse Racing Event New Years Eve: Resources and Safe Travel options
- Noho Taio: Youth Promotion, resources and discussion with young people on making good decisions when it comes to driving and travelling with others.
- National Waka Ama Nationals: Patience to Paradise promotion, travel planning.
- Māori National Basketball Championships: Patience to Paradise travel planning, Belts On Bounce On promotion campaign, One Tear Too Many Slow Down promotion.
- Patience to Paradise promotional social media campaign December 28th – January 10th on Far North REAP Facebook page.



[Bike Northland](#) are contracted to deliver Council’s bike safety and skills training and they utilise the Waka Kotahi programme [BikeReady](#). Bike Northland are delivering Grade 1 only at this stage and working with schools to build a Grade 2 programme which is where students are taken on the road. Bike Northland also help support the bikes in school’s programme. There was no deliver in the month of January with schools still being on closed for holidays. Their key deliverables are summarised below:

2023/24 Far North District Council		
Course	Contracted	YTD
Grade 1	1050	994

SPEED LIMIT REVIEW PROGRAM

Following the December Government announcement on Speed Limits, staff have now placed the 2024/27 Regional Speed Management process on hold. A report to council will be prepared by staff

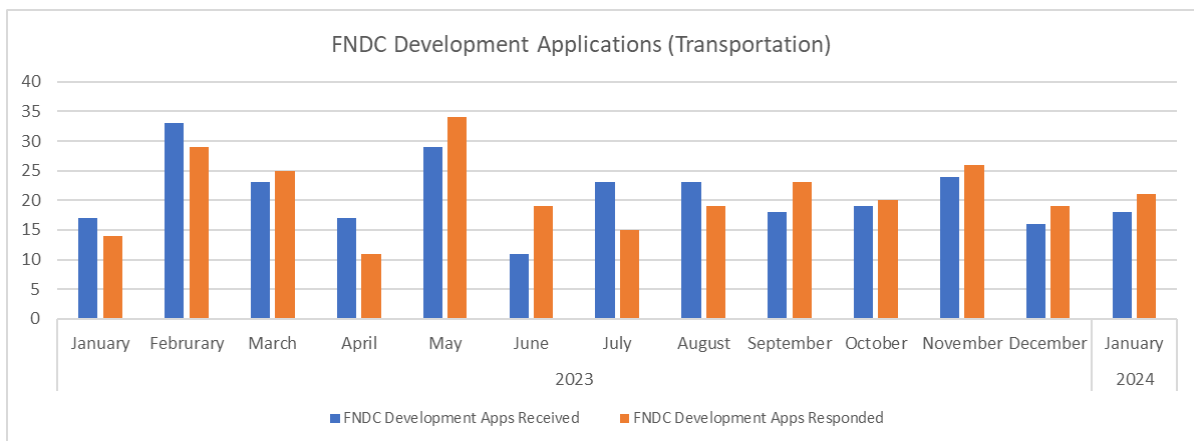
following receipt of further guidance from Government (expected in early 2024) to obtain direction on the District’s 2024-2027 speed management programme.

DEVELOPMENT APPLICATIONS (Transportation)

The following table and graph below provide information on the volume of development applications received for transportation assessment over the past twelve months.

After the Christmas / New Year shutdown, during the month of January, a total of eighteen applications were received (vs. twelve month rolling average of nineteen) and a total of twenty-one application were processed.

Year	Month	FNDC			
		Development Apps		Alfresco	
		Received	Responded	Received	Responded
2023	January	17	14	1	0
	February	33	29	1	2
	March	23	25	2	2
	April	17	11	1	1
	May	29	34	0	0
	June	11	19	2	2
	July	23	15	1	1
	August	23	19	1	1
	September	18	23	6	5
	October	19	20	4	4
	November	24	26	5	5
	December	16	19	1	1
2024	January	18	21	2	2

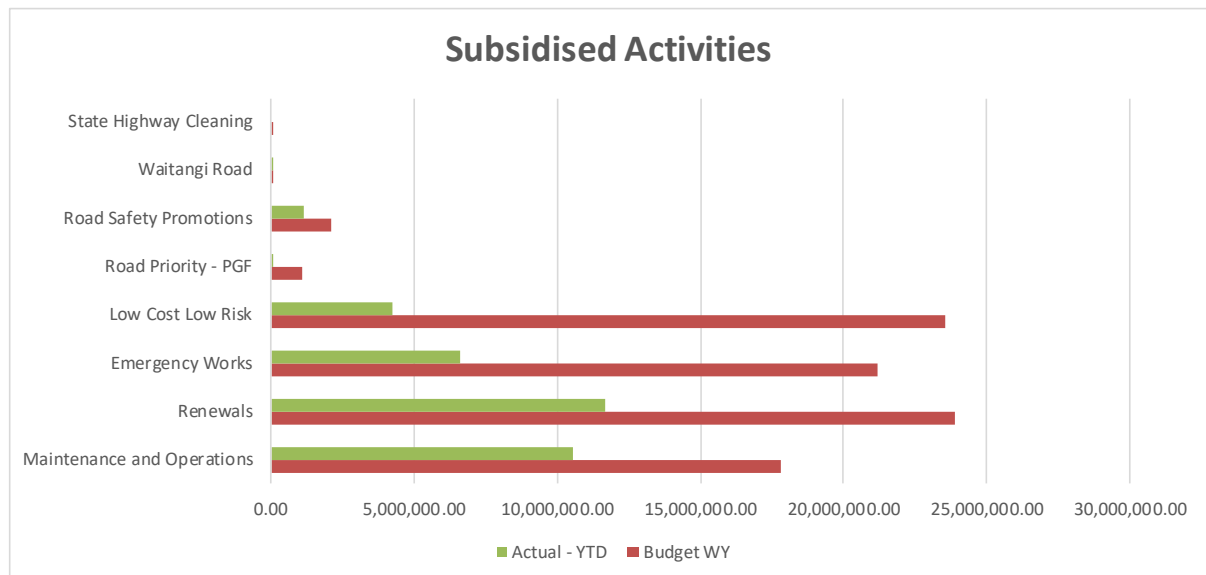
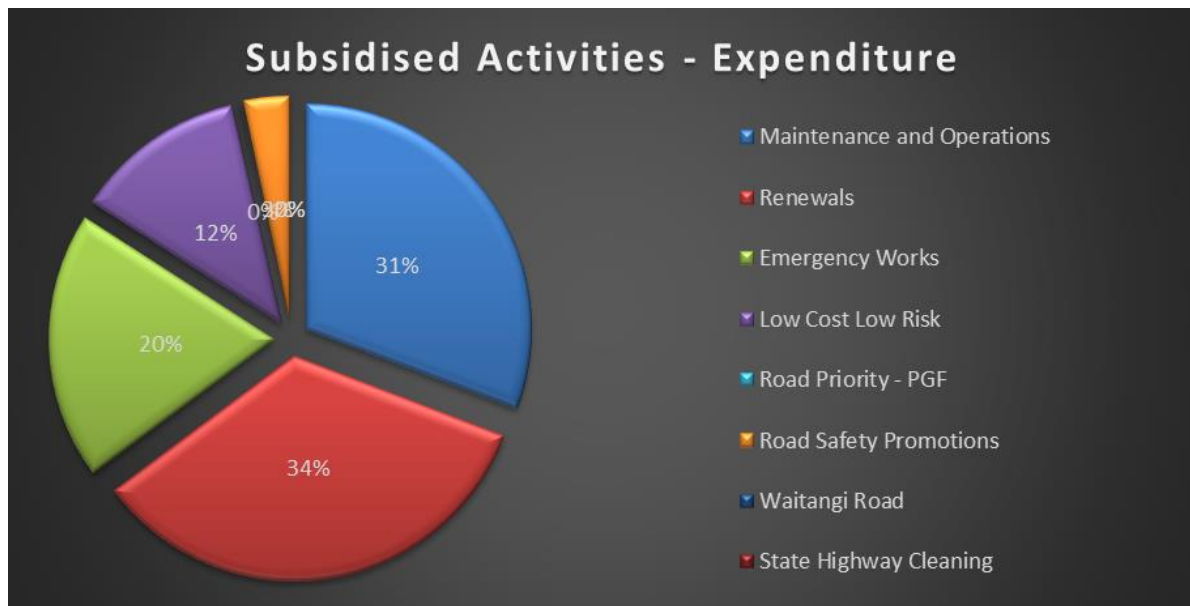


FNDC TRANSPORT BUDGET EXPENDITURE ALLOCATION PROGRESS

The graphs provided below provide an overview of the key areas of “subsidised” transport expenditure over the first 7 months (July 2023 to January 2024) of the current 2023/24 financial year.

As demonstrated in the pie graph below, 85% of subsidised expenditure year to date relate to the three core activities of Renewals (34%), Maintenance & Operations (30%) and Emergency Works (21%) with completion of each of these activities tracking well against available approved full year budgets.

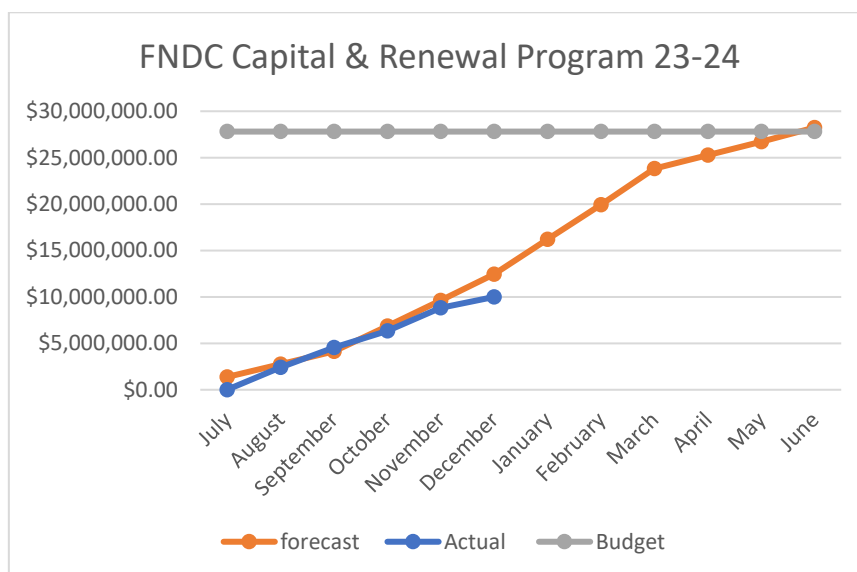
\$32.751M of transport works were completed in the first six months of the 2023/24 financial year, being a 33% increase on the \$24.602M of works completed in the equivalent period of the previous year.



FNDC TRANSPORT CAPITAL PROGRAMME DELIVERY

Capital Works programme activities continued with the improved weather seeing pavement works and other activities progressing well.

The current total forecast is slightly greater than approved budget primarily due to outcome of revised cost forecasts undertaken that take current escalation impacts into account. Discussions are presently in progress with Waka Kotahi to secure additional subsidy funding however if this additional funding is not provided the programme will be re-prioritised and re-forecast to ensure it remains within approved budgets.



Notes –

December low expenditure result of shortened (2 week) invoicing period
January actual expenditure data unavailable at the time of finalising report

Project Risk Table

FNDC	No. of Projects	Description	Budget	% of Total Budget
🟢	29	Will be fully delivered this year	\$19,412,509.00	70%
🟡	14	Risk of partial delivery	\$6,878,700.39	25%
🔴	9	Risk of non delivery	\$1,517,500.00	5%
		Total	\$27,808,709.39	100%

*Note – a full list of 2023/24 projects (complete with status and risk assessment) provided below.

Staff are presently working with FNDC Finance team to complete reforecasting of programme to inform likely carry forward values for the Long Term Plan.

FNDC Monthly Report - January 2024

Work Category	Category	Project Title	Location	Monthly status update	Next months status update	Risk
141	Emergency Works	Fairburn Road RP9668 (RRMS Slip ID 232445)	Fairburn Road RP9668	Construction underway	Construction underway	●
141 - Emergency Works Total			\$416,336.00			
212	0	Sealed Road Resurfacing	Network Wide	Construction underway	Construction underway	●
212 - Sealed Resurfacing Total			\$4,553,540.00			
213	0	Drainage Renewals	Network Wide	Design Stage	Construction underway	●
213-Drainage Renewals Total			\$200,000.00			
214	HG	SOMMERVILLE AVENUE (KAITAIA)	SOMMERVILLE AVENUE (KAITAIA) RP 10 to RP 184 = 174m	Construction underway	Construction completed	●
214	HG	NGAPIPITO ROAD	NGAPIPITO ROAD RP 1850 to RP 3000 = 1150m	Construction completed	Construction completed	●
214	HG	CUMBER RD	CUMBER ROAD RP 0 TO RP 421 = 421m	Design Stage	Construction underway	●
214	HG	ORAKAU RD	ORAKAU RD RP 14822 TO RP 15050 = 228m	Construction completed	Construction completed	●
214	HG	PIPIWAI RD	PIPIWAI RD RP 12274 TO RP 12610 = 336m	Construction underway	Construction completed	●
214	HG	GILL RD	GILL RD RP 470 TO RP 1390 = 920m	Construction completed	Construction completed	●
214	HG	GILL RD	GILL RD RP 1423 TO RP 2180 = 757m	Construction completed	Construction completed	●
214	HG	MIDGLEY RD	MIDGLEY RD RP 600 TO RP 1900 = 1300m	Construction underway	Construction completed	●
214	HG	KAITAIA-AWAROA RD	KAITAIA-AWAROA RD RP 28540 TO 30140 = 1690m	Construction underway	Project on hold	●
214	HG	PAWARENGA RD	PAWARENGA RD RP 2306 TO 2956 = 650m	Design Stage	Design Stage	●
214 - Sealed Rehab Total			\$3,760,000.00			
215	0	General Bridge Repairs 2021/24 (SP3)	Network Wide	Procurement Stage	Construction underway	●
215	0	Scour Protection Works 2021/24 (SP3)	Network Wide	Construction underway	Construction underway	●
215	0	Hihi Road Bridge F07 and Matai Rd Bridge C03	Hihi Road Bridge F07	Construction underway	Construction underway	●
215 - Structures Component Replacement Total			\$2,150,000.00			
216	0	Churtons Road Bridge C13 Replacement	Churtons Road Bridge C13	Construction completed	Construction completed	●
216	0	Quarry Road Bridge B13 & Wekaweka Road J18 Culvert Replacement	Quarry Road (Awanui)	Construction underway	Construction underway	●
216	0	Whangaroa Road UN28, Waharua Road A39 & West Coast Road (Kohukohu) G28 Culvert Replacements (PW + Prof Serv)		0 Procurement Stage	Procurement Stage	●
216		Contract Management - Fixed Costs				●
216 - Bridge and Structures Renewals Total			\$2,700,000.00			
341	Road 2 Zero	144229 - Safety - Speed Management via Local Area TM	Ahipara Rd, Ahipara Township	Procurement Stage	Construction underway	●
341	Road 2 Zero	152000 - Safety - High Risk Rural Roads (HRRR)	Ahipara-Sandhills	Procurement Stage	Construction underway	●

Work Category	Category	Project Title	Location	Monthly status update	Next months status update	Risk
341	Low Risk Improvement	152002 - Resilience Improvements 2021/22 - Beach Road, Mangonui	Beach Road, Mangonui	Project planning stage	Project deferred to future years	●
341	Road 2 Zero	144220 - Safety - Speed Management	BOI and Kerikeri	Design Stage	Design Stage	●
341	Low Risk Improvement	144247 - Safety - Pedestrian Improvements	Cobham Rd/Hone Heke Rd Intersection	Design Stage	Design Stage	●
341	Low Risk Improvement	152011 - Resilience Improvements 2023/24 - Hupara Road	Hupara Road RP 3028-3058, Moerewa	Procurement Stage	Procurement Stage	●
341	Road 2 Zero	144226 - Safety - Speed Management via Local Area TM	Kaikohe Nth Urban Area	Construction completed	Construction completed	●
341	Low Risk Improvement	144256 Stock Truck Effluent Diposal Facilities	Kaitaia and Kaikohe	Project on hold	Project on hold	●
341	Road 2 Zero	144229 - Safety - Speed Management via Local Area TM	Kaitaia Urban Area	Procurement Stage	Construction underway	●
341	Road 2 Zero	144236 - Safety - School Zones (& Safer Journeys for Schools)	Kerikeri Primary and High Schools	Project on hold	Project on hold	●
341	Low Risk Improvement	152008 - Resilience Improvements 2023/24 - Kohukohu Road	Kohukohu Road RP602, Kohukohu	Design Stage	Design Stage	●
341	Low Risk Improvement	152006 - Resilience Improvements 2022/23 - Manawaora Road	Manawaora Road	Construction underway	Construction underway	●
341	Road 2 Zero	151999 - Safety - Speed Management via Local Area TM	Moerewa - Otiria & Side Roads	Construction completed	Construction completed	●
341	Road 2 Zero	144235 - Safety - School Zones (& Safer Journeys for Schools)	Moerewa School	Project on hold	Project on hold	●
341	Road 2 Zero	144218 - Safety - Speed Management	North Hokianga and Kaitaia	Procurement Stage	Construction underway	●
341	Low Risk Improvement	152010 - Resilience Improvements 2023/24 - Pawarenga Road	Pawarenga Road RP 517-537	Design Stage	Design Stage	●
341	Low Risk Improvement	144212 - Safety - Urban/Rural Intersection (HRRl)	Pukepoto Rd/ Lake Rd	Construction underway	Construction underway	●
341	Low Risk Improvement	144248 - Safety - Pedestrian Improvements	Redan Rd	Procurement Stage	Construction underway	●
341	Low Risk Improvement	144213 - Safety - Urban/Rural Intersection (HRRl)	Reef View/Foreshore Road	Construction underway	Construction underway	●
341	Road 2 Zero	144238 - Safety - School Zones (& Safer Journeys for Schools)	Riverview School	Project on hold	Project on hold	●
341	Low Risk Improvement	144214 - Safety - Urban/Rural Intersection (HRRl)	Tokerau Beach Road/ Inland Road	Construction underway	Construction underway	●
341	Low Risk Improvement	144142 - Associated Improvements	Various Locations	Project planning stage	Design Stage	●

Work Category	Category	Project Title	Location	Monthly status update	Next months status update	Risk
341	Road 2 Zero	160157 - Safety - Speed Management	Various Schools in BOI and Kerikeri catchment	Project on hold	Project on hold	●
341	Low Risk Improvement	152007 - Resilience Improvements 2023/24 - Waikare Road	Waikare Road RP 10935-10970, Waikare	Design Stage	Design Stage	●
341 - Low Cost Low Risk Total			\$8,312,950.39			
seal extensions	0	PAWARENGA ROAD	PAWARENGA ROAD RP 11903 to RP 13583 = 168	Construction completed	Construction completed	●
seal extensions	0	RUAROA RD	RUAROA RD RP 3008 to 5681 = 2673m	Construction underway	Construction underway	●
seal extensions	0	HAUTAPU RD	HAUTAPU RD RP 0 - 530 = 530m	Design Stage	Design Stage	●
seal extensions	0	HAUTAPU RD	HAUTAPU RD RP 4736 - 5937 = 1201m	Design Stage	Design Stage	●
Seal Extensions Total			\$2,478,500.00			
unsub footpath	0	BOI-Whangaroa New Footpath: Queen Street	Queen Street from Wellington - Little Queen St, Russell	Procurement Stage	Procurement Stage	●
unsub footpath	0	BOI-Whangaroa New Footpath: SH11 Haruru	SH11 from Nautical Dr - Haruru Falls Rd, Haruru	Procurement Stage	Procurement Stage	●
unsub footpath	0	BOI-Whangaroa New Footpath: Te Tii Road	Te Tii Road from BOI Academy - Whitiara Marae, Te Tii	Design Stage	Design Stage	●
unsub footpath	0	Kaikohe-Hokianga New Footpath: Horeke Road	Horeke Road from end of existing path - School, Horeke	Design Stage	Design Stage	●
unsub footpath	0	Kaikohe-Hokianga New Footpath: Manning Street	Manning Street from 14 Manning St - Marmon St, Rawene	Design Stage	Design Stage	●
unsub footpath	0	Kaikohe-Hokianga New Footpath: Mitchie Street	Mitchie Street from Lawn St - end of road, Okaihau	Design Stage	Project deferred to future	●
unsub footpath	0	Kaikohe-Hokianga New Footpath: Parnell Street	Parnell Street: gap between Honey St & School, Rawene	Procurement Stage	Procurement Stage	●
unsub footpath	0	Kaikohe-Hokianga New Footpath: Parnell Street	Parnell Street: gap at Nimmo St, Rawene	Procurement Stage	Procurement Stage	●
unsub footpath	0	Kaikohe-Hokianga New Footpath: SH12 Ohaewai	SH12 from pre-school - existing path & existing path - rugby field, Ohaewai	Design Stage	Project deferred to future	●
unsub footpath	0	Kaikohe-Hokianga New Footpath: SH12, Kaikohe	SH12 from Reservoir Rd - Showgrounds, Kaikohe	Design Stage	Project deferred to future	●
unsub footpath	0	Te Hiku New Footpath: Cable Bay Block Road	Cable Bay Block Road, Cable Bay	Construction underway	Construction underway	●
unsub footpath	0	Te Hiku New Footpath: Taupata Place	Taupata Place, Kaitaia	Construction underway	Construction underway	●
unsub footpath	0	Te Hiku New Footpath: Takahe Rd	Takahe Rd, Ahipara	Construction underway	Construction underway	●
Unsub Footpath Total			\$3,237,383.00			
GRAND TOTALS			\$27,808,709.39			

Photo Wall – January 2024



7/21/215 SP3 – Scour Protection Works at Pipiwai Road Bridge W08



7/21/215 SP3 – Scour Protection Works at Matawaia-Maromaku Road Bridge W22



Pipiwai Road



Bisset Road

FNDC TRANSPORT MAINTENANCE PROGRAMME

Key points of note for the month of January includes:

- Routine grading and metalling have been lower than normal due to loss of pavement moisture content.
- Pre-seal repairs, potholing, mowing, and catchpit entrance clearing completed for the month.
- Programmed works completed were culvert replacements and culvert end clearing/flushing, Signs and edge marker post replaced, cleaned straightened and painted. Spraying, edgebreak /shoulder repairs, dig outs and stabilised patches and sweeping.
- Remarking of road centreline and edgelines is still in progress for the North area

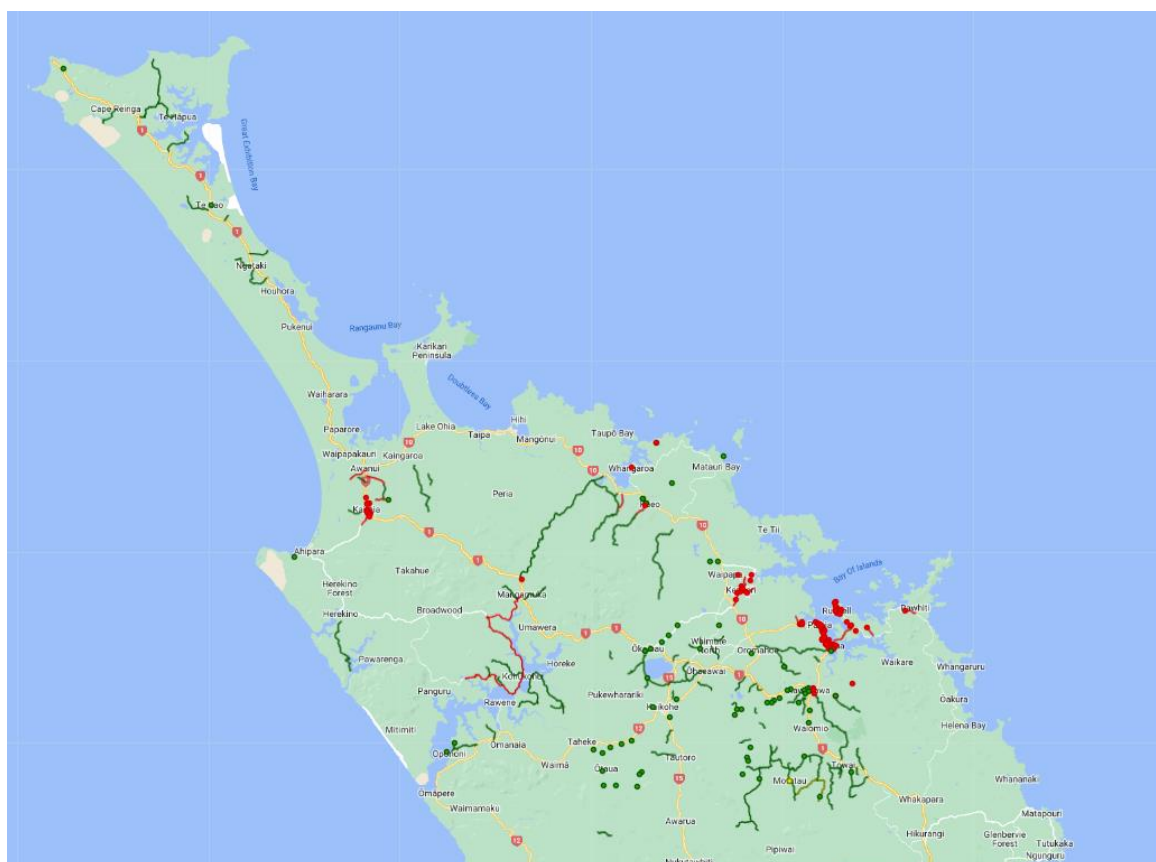
Maintenance activities programmed for February relate to:

- Routine unsealed and sealed network maintenance activities
- Pre-reseal pavement repairs
- Drainage works
- Footpath renewals
- Planning and programming work for Phase 2 reinstatement works for storm damages moved from Phase 3 to Phase 2 for August 2022 and May 2023 Storm Event.

Daily site checks on Phase 3 sites continues.

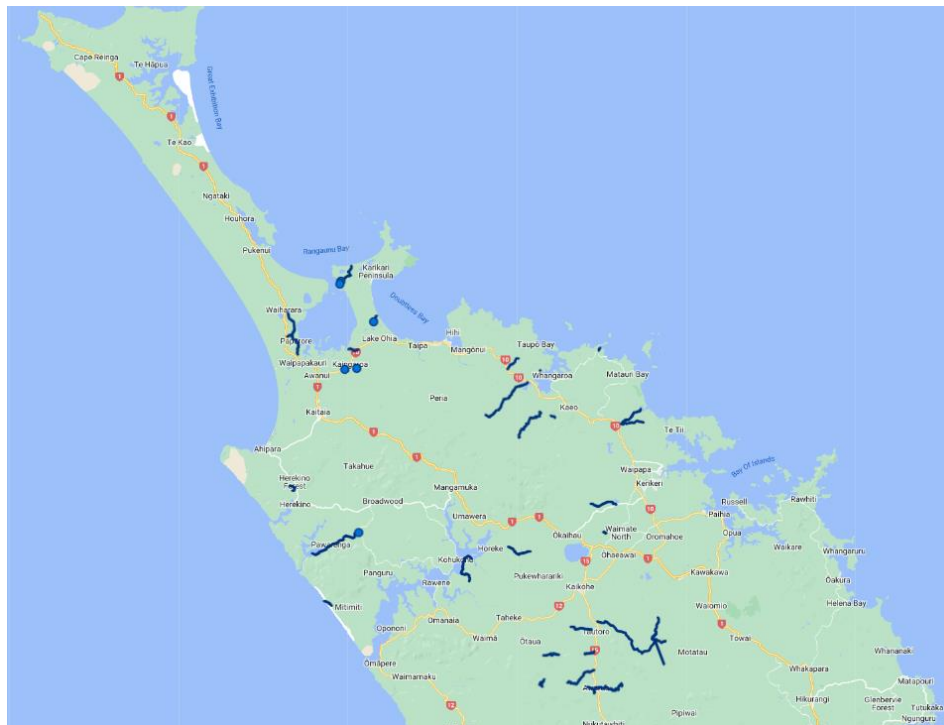
Network Inspections

The map below provides a visual representation of all completed inspections carried out by the contractors for the month of January (unsealed roads shown as green, and sealed roads in red).



Completed Grading

Routine grading has been lower as normal due to dry summer conditions with 10.6% (or 171km) of the unsealed network length completed, as represented in the map to the right.



Innovation – Recycled Concrete Pothole Materials

While not a new innovation, it is one that Ventia have shared for a while with the wider industry folk in Northland.

Any concrete material removed through the footpath renewals programme in the Southern contact area comes back to Puketona Quarry where the Quarry team put it through the main crusher and grade it to the same specifications as normal pothole material used on the unsealed networks.

It performs just as well if not better in certain environments than natural pothole material due to its tight binding qualities. While the cost isn't less than normal mix the main thing is the environment impacts of reusing a product for a second time and the performance properties of the new product.



EMERGENCY WORKS RECOVERY PROGRAMME

PHASE 2 DELIVERY

Minor works, less than \$100k (generally), per site, low risk, reinstatement of roads to pre-event condition (may require geo-tech assessment to support outcomes). Waka Kotahi funding approval through report applications.

Works completed in January

Road	Start	End	Length	Asset Type	Fault
OTATARA MARAE ROAD	513			Drainage (Culverts)	Install headwall structure - Scour (ea.)
TAHEKE ROAD	8337	8353	16	Capital Projects	Resilience - Customer access
WAIOTEMARAMA GORGE ROAD	4742	4744	2	Emergency/Call Out Environment	Remove material - Overslip (>1m3)
LAKE ROAD (OKAIHAU)	8752	8772	20	Retaining Walls	New construction - Drop out (m)
DIGGERS VALLEY ROAD	4735	4765	30	Retaining Walls	New construction - Drop out (m)

Works planned for February:

- Phase 2 slips - planning and programming activities are underway for August 2022 and May 2023 Storm Event sites previously assessed as complex, but subsequently confirmed through the Emergency Works Assessment (EWA) process as lower complexity Phase 2 repairs. These are presently scheduled to be completed by the end of the current financial year (30th June 2024)

PHASE 3 DELIVERY

The Far North has 38 sites confirmed under **Phase 3** – these sites require detailed geotechnical investigation and design, followed by construction, and the necessary procurements for each.

The three sites noted as 'Complex' under the Stage identifier below have full design reports and construction drawings completed and are currently undertaking the external design peer review for the most complex site (Motuti) and finalising Construction tender documents.

Contract agreements are currently being finalised between Council and two consultants for two separate work packages for the Investigation & Design works across seven priority slip sites. This work will take approximately 3-4 months to complete to have construction packages ready.

The remaining 28 sites in Far North's programme (Stage 1b) is working through procurement of the professional services for the necessary investigation and design work.

NZTA, Waka Kotahi funding is confirmed for all Investigation & Design works, and all Construction funding is expected to be confirmed by mid-February. Council will have a local share component of varying FAR rates dependent on the weather event, and timing for construction. Staff officers will provide a clearer picture of what to expect from a funding and timeframe perspective as the outcome of investigations is understood.

Phase 3 Emergency Works funding status and estimated construction timing						
Stage Identifier	Slip site location	RP	Engineers estimate	NZTA Construction funding confirmed	FNDC construction funding contribution	Estimated construction timing
Complex	WEST COAST ROAD	20915	\$920,000	outcome mid Feb	decision at 20.02 Te Koukou Transport Committee	Q2 24/25
Complex	WHANGAE ROAD	4817	\$690,000	outcome mid Feb	decision at 20.02 Te Koukou Transport Committee	Q2 24/25
Complex	WEST COAST ROAD, MOTUTI	16775	\$4,025,000	outcome mid Feb	decision at 20.02 Te Koukou Transport Committee	Q3 24/25
Stage 1	KAITAIA - AWAROA	13525	\$251,936	yes	Approval will be sought following investigations	Q2 24/25
Stage 1	PAWARENGA RD	8151	\$1,259,681	yes	Approval will be sought following investigations	Q1 25/26
Stage 1	KAITAIA - AWAROA	26807	\$2,015,490	yes	Approval will be sought following investigations	Q3 24/25
Stage 1	MANGAMUKA RD	2948	\$657,225	outcome mid Feb	Approval will be sought following investigations	Q3 24/25
Stage 1	WAINUI - MATAURI BAY RD	4995	\$730,250	yes	Approval will be sought following investigations	Q3 24/25
Stage 1	WAINUI RD	6561	\$1,022,350	yes	Approval will be sought following investigations	Q3 24/25
Stage 1	WAINUI RD	4655	\$730,250	yes	Approval will be sought following investigations	Q3 24/25
Stage 1b	BROADWOOD RD	296	\$172,500	yes	Approval will be sought following investigations	Q2 24/25
Stage 1b	CHURCH ROAD (KAITAIA)	1404	\$292,100	yes	Approval will be sought following investigations	Q2 24/25
Stage 1b	DUNCAN ROAD (KAINGAROA)	13894	\$146,050	outcome mid Feb	Approval will be sought following investigations	Q2 24/25
Stage 1b	FISHER-RILEY ROAD	2820	\$321,310	yes	Approval will be sought following investigations	Q2 24/25
Stage 1b	HONEYMOON VALLEY ROAD	5585	\$251,936	yes	Approval will be sought following investigations	Q2 24/25
Stage 1b	IWITAU RD	6252	\$230,000	outcome mid Feb	Approval will be sought following investigations	Q2 24/25
Stage 1b	MATAWAIA - MAROMAKU	7182	\$172,500	outcome mid Feb	Approval will be sought following investigations	Q2 24/25
Stage 1b	MONUMENT RD	6844	\$172,500	Yes	Approval will be sought following investigations	Q2 24/25
Stage 1b	ORURU ROAD	2348	\$328,613	outcome mid Feb	Approval will be sought following investigations	Q2 24/25
Stage 1b	PARANUI RD	4460	\$172,500	outcome mid Feb	Approval will be sought following investigations	Q2 24/25
Stage 1b	TAPUHI RD	8730	\$287,500	outcome mid Feb	Approval will be sought following investigations	Q2 24/25
Stage 1b	TE RORE ROAD	3039	\$219,075	yes	Approval will be sought following investigations	Q2 24/25
Stage 1b	WAIARE RD	28085	\$287,500	outcome mid Feb	Approval will be sought following investigations	Q2 24/25
Stage 1b	WAIKARE ROAD	19970	\$219,075	Yes	Approval will be sought following investigations	Q2 24/25
Stage 1b	PAPONGA ROAD	2453	\$1,022,350	yes	Approval will be sought following investigations	Q1 25/26
Stage 1b	DUNCAN ROAD (KAINGAROA)	10069	\$511,175	outcome mid Feb	Approval will be sought following investigations	Q3 24/25
Stage 1b	DUNCAN ROAD (KAINGAROA)	14443	\$693,738	outcome mid Feb	Approval will be sought following investigations	Q3 24/25
Stage 1b	DUNCAN ROAD (KAINGAROA)	10105	\$949,325	outcome mid Feb	Approval will be sought following investigations	Q3 24/25
Stage 1b	FRYER RD	3487	\$230,000	outcome mid Feb	Approval will be sought following investigations	Q3 24/25
Stage 1b	FRYER RD	2892	\$460,000	outcome mid Feb	Approval will be sought following investigations	Q3 24/25
Stage 1b	LARMER ROAD	2117	\$876,300	outcome mid Feb	Approval will be sought following investigations	Q3 24/25
Stage 1b	MANGAMUKA RD	7860	\$172,500	yes	Approval will be sought following investigations	Q3 24/25
Stage 1b	WAIARE ROAD	28047	\$365,125	outcome mid Feb	Approval will be sought following investigations	Q3 24/25
Stage 1b	WAIKARE ROAD	10600	\$365,125	Yes	Approval will be sought following investigations	Q3 24/25
Stage 1b	WAIKARE ROAD	8444	\$511,175	outcome mid Feb	Approval will be sought following investigations	Q3 24/25
Stage 1b	WAIMATE NORTH RD	3227	\$638,250	yes	Approval will be sought following investigations	Q3 24/25
Stage 1b	WHANGAE RD	4817	\$638,250	outcome mid Feb	Approval will be sought following investigations	Q3 24/25
Stage 1b	WHANGAPE RD	6228	\$730,250	outcome mid Feb	Approval will be sought following investigations	Q3 24/25

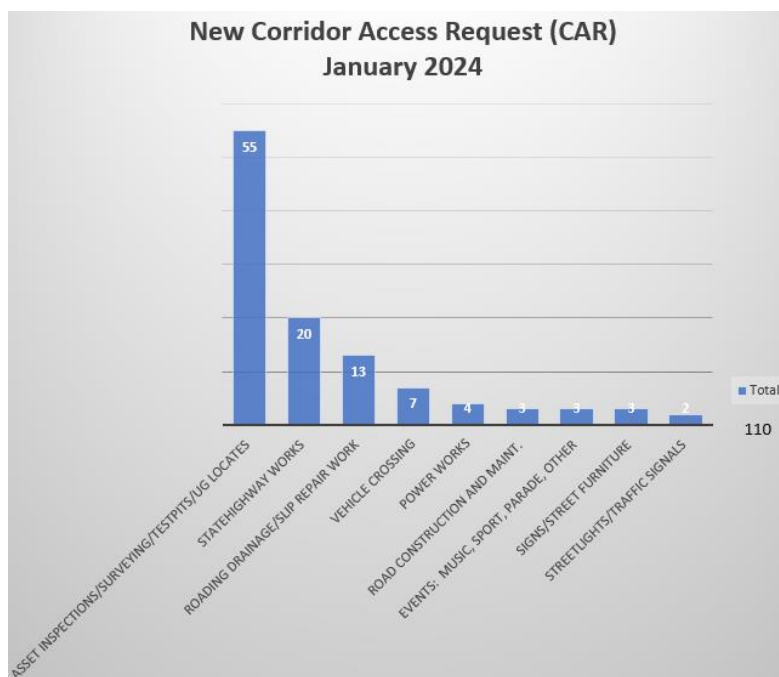
Nb: construction timing is best estimates until investigations are completed, and procurement strategy is confirmed.

NZTA, Waka Kotahi Investigation and Design funding has been confirmed across all sites (not included in the above table).

Corridor Access Requests (CARs) and Temporary Traffic Management

CARs and Temporary Traffic Management Applications

There were 110 CAR applications received for works in the road reserve across Far North district in January. A breakdown of the activities in the graphs shows a huge increase in Asset Inspections, Surveying and Test pits due to an unusually high number (50%) of applications received from one applicant undertaking a project across the Far North to test the soil composition for lithium.



20% of applications related to State Highway work and the balance of works were spread across activities – these numbers appear considerably low which requires an increased presence on the network to improve visibility in the Far North.

There were 85 CAR applications approved in January for Far North district, with 50 of these approved applications related to the soil testing project.

Work Completion Notifications, Reinstatement Inspections and Traffic Management Audits

There were 40 Corridor Access Requests (CARs) completion status updates in January and four temporary traffic management safety audits. Two sites scored 'High' and the other two audits scored ratings of 'Acceptable' and 'Needs Improvement'.

TTM Review Panels were held on 23 and 30 January to review unacceptable, unsafe, Stop Work or non-compliant traffic management sites.

CAR Status	Count of Activity
Cancelled	17
Closed	2
Completion Notified	7
Warranty Expired	13
Work in Warranty	1
Grand Total	40

The Stop Work Order issued to Tarmac working on Recreation Road in October remains in progress as we await a Corrective Action Plan. In the interim we have set restrictions on the owner/STMS Hayden Flintoff which restrict him from managing traffic management sites and physicals works on the live lane and can only work as an STMS on the road shoulder. We will continue to work with Tarmac in this regard.

Other TTM Updates:

Waitangi Day traffic management planning started back in December and continued in January with Police, Fraser Hoani for NTA/FNDC Rooding, NZTA Waka Kotahi and TTM providers working together to prepare for this significant day. A huge amount of work and hui have been held to ensure management of people, traffic and parking in the road makes for a successful arrival of attendees. Kia Tupato will install Archer Guard Barriers which are used as hostile vehicle protection at crowded places. The barriers have not been used before in the Far North so its great to see contractors bringing new innovations in traffic management in Te Tai Tokerau to keep everyone safe.



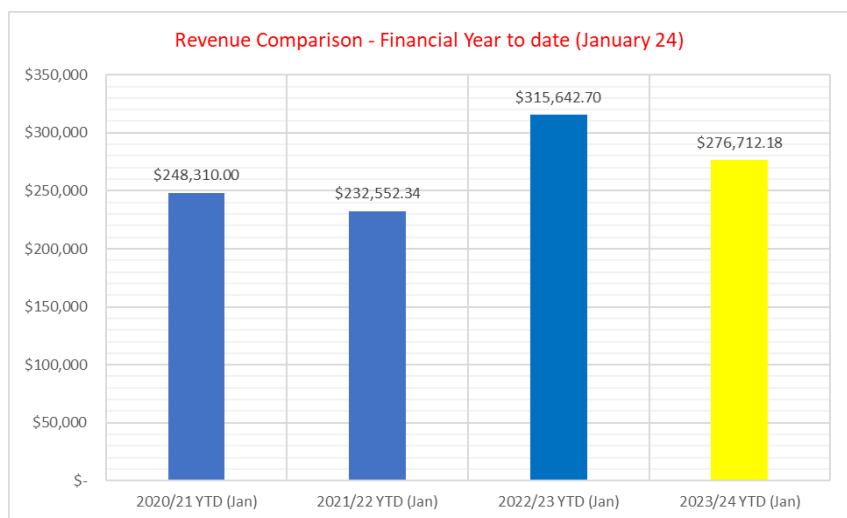
Fraser Hoani worked closely with Beverly Mitchell from the Te Hiku Community Board and received an email of appreciation for his assistance and technical knowledge to support the filming going ahead. The event promoter also expressed their appreciation with the following statement - ***“What was encouraging was the support from Council and roading. Nothing was a problem. Support is critical to the success of film projects.” Clayton Tikao***

Stop Go traffic management to relieve congestion at the Waitangi bridge has been implemented in January for cruise ship arrivals in Paihia to make it safe and seamless for the 8,000 passengers descending from the docks.

HOKIANGA FERRY (KOHU RA TUARUA)

Revenue

The January 24 revenue was comparable to the same period last year. While there was a downward trend in ticket sales for passengers this was offset by a slight upward trend for vehicles. The Year to Date revenue remains lower than the same period last year and is likely to be in part due to the closure of SH1 Mangamuka Gorge and ongoing pressures due to cost of living.



Tabulated below is the revenue comparison for the same period last year:

January 2024	January 2023	Difference
\$63,436.52	\$63,795.22	\$358.70

Patronage & Service Information

The Ferry service carried a daily average of 701 passengers and 330 vehicles for the month of Jan 24. The schedule departures were 97.1% on time for the months with 202 shuttling's and 4 after hours charters.

Unique visit to the Hokianga pages within Northland Ferries website were up by 3% this month when compared to last month.

There were no customer complaints received and only two requests one being for an afterhours service and the other from NZ Police for CCTV footage related to a vehicle of interest. There were no mechanical or weather-related interruption to the service.

Planned, Routine & Preventive Maintenance

The following routine and preventive maintenance were carried out on the vessel this month which included:

- a. All engine oil change.
- b. Grease ramp mechanisms
- c. Engine #4 throttle actuator motor replaced.
- d. Engine #3 alternator replaced.
- e. Cleaning of bilges
- f. Concrete ramps treated with chlorine and water blasted.

Furthermore, a total of 20,956 litres of fuel were filled in the vessel. In the last twelve months, 181,949.4 litres have been purchased against 13,511 engine running hours that averages 13.5 litres per hour of operation.

Asset Renewal

The following asset renewal activities were carried out this month:

- a. Life jacket storage box fabrication – In Progress
- b. Passenger cabin seat replacement – 75% complete
- c. Graffiti mitigation in passenger cabin – materials ordered
- d. Engine room lighting – materials ordered

Health & Safety, Risks

There were no incidents or near misses recorded for the month. The vessel's monthly HSE audit as well as weekly emergency response training was carried in accordance with the vessel's operating procedure.

Furthermore, an audit of vehicle and passenger ticket sales was also carried out using CCTV footage and Northland Ferries have confirmed that correct number of sales and concession clicks were made in Jan 24.

Streetlighting

The streetlight maintenance and renewal contract is now in its second separable portion and following activities are underway:

- Night inspection of streetlight assets and defects being recorded and rectified.
- A comprehensive annual day inspection for FNDC streetlight assets has commenced which includes pedestrian crossings, arterial, collector & minor roads as well as amenity lighting in the district. This is part of the annual asset condition assessment.
- Sample inspection of out of warranty CREE LED way model luminaires is underway. There has been ingress of water and dust/dirt in the luminaire which has caused some to fail.
- Sample inspection of Orange Tek brand luminaires are also underway to ascertain the cause of the premature failure of the shorting caps.
- Colchek (non-destructive testing of steel streetlight poles) on 20 streetlight columns had been carried with 5 columns failing the test. These are planned to be replaced as part of streetlight renewals activity in this financial year.

The request to hang decoration and banners by the Kaitia Business Association (KBA) on FNDC streetlight assets were approved based on a structural engineer's assessment of the same. This had been communicated to KBA with the complexity of such requests discussed in detail as well.

Lighting design reviews for streetlighting related to new developments and early planning are on-going. The lighting design review/briefs for Switzer Western Residential Village, Grigg St Kaitia and Morey Rd in Cable Bay were completed in January.

CUSTOMER REQUESTS

We have had a spike in the volume received during January with 494 requests received (100 requests more than the month prior). At the end of January, there were 520 open requests, being an 15% increase from the prior month. This rise can be attributed to the unexpected surge in volume and holiday shutdown period.

