

Bay of Islands Marina Precinct

LINZ NZ Primary Parcels

Zones

- General Residential
- Light Industrial
- Mixed Use
- Natural Open Space
- Rural Production
- Sport And Active Recreation

Bay of Islands Marina Precinct and Recommended Mixed Use Zoning

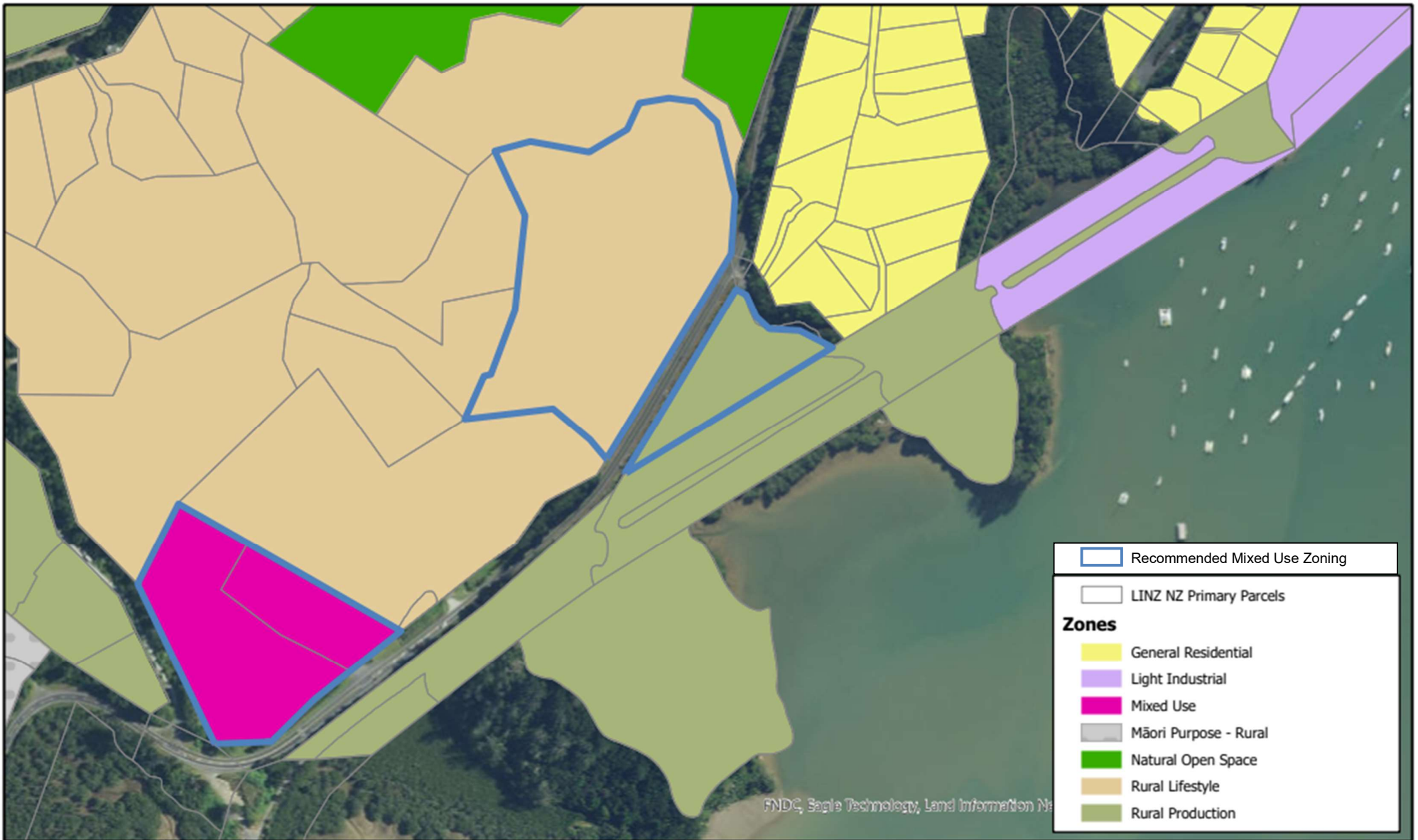
Mixed Use Zoning recommended to apply to Bay of Islands Marina Precinct
underlying zone



0 0 0 0 km
Projection NZTM2000. Datum NZGD2000. Scale:1:4,514

DISCLAIMER:

While the Far North District Council strives to keep the data in this service current, it may not be the most recent or most accurate data available. No reliance on the information contained on this map by any person is permitted. FNDC will not be liable for any omissions or errors of information contained on this map. FNDC recommends that persons seek specific advice on individual properties from FNDC and other specialist organisations which may hold more up to date or accurate information.



DISCLAIMER:

While the Far North District Council strives to keep the data in this service current, it may not be the most recent or most accurate data available. No reliance on the information contained on this map by any person is permitted. FNDC will not be liable for any omissions or errors of information contained on this map. FNDC recommends that persons seek specific advice on individual properties from FNDC and other specialist organisations which may hold more up to date or accurate information.