

Kurī Kārere Doggo Digest

Doggo updates and registration info for 2022

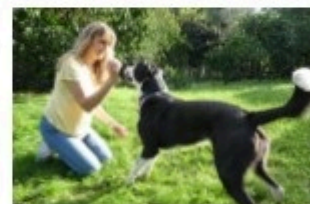


Your annual dog registration is due. It helps us keep our canine community safe.

A

AROHA — THE FEELING OF LOVE

Briar adopted Flynn from us about 18 months ago. She estimates he's just over two years old now. Flynn has boundless energy when it comes to ball time, but also loves chilling in his cosy bed at night. Flynn has found the ultimate forever home with Briar and her partner. Because Flynn is desexed he qualifies for a cheaper registration fee.



R

REHITATANGA | REGISTRATION

Your dog registration fee supports lots of good stuff, like:

- a dog management service that helps people and dogs interact safely
- our adoption scheme, which unites dogs with new homes across the country
- community canine concerns — straying, barking, aggressive dogs and dog attacks
- pro-active community work promoting responsible dog ownership.



O

HE TAIMA WAHO | OUTSIDE TIME

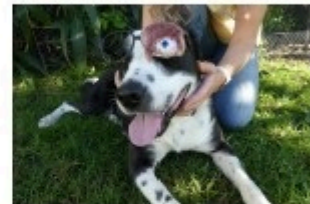
When going 'walkies' with your dog make sure you are aware of council bylaws. Every dog area is unique — we have off-leash and on-leash areas, as well as kiwi and DOC zones. Dog walking areas are listed at the bottom of this page or find our maps online by following these steps: fndc.govt.nz/our-services/dogs; open the Dog Management Policy 2018; find the map for your area from page 20.



H

HAUORA KŌRERO | HEALTH INFO

Dogs that suffer from allergies can display excessive licking, chewing of paws, higher than normal hair loss and scratching. Itch can be caused by parasites like fleas, or it may be due to an allergy from something in your dog's diet or environment. Most skin irritations are treatable, your vet can help you identify what's causing your dog's itch and suggest effective treatments to provide relief.



A

HE KAI TIKA MĀRIKA | A GOOD DIET

A balanced doggie diet is vital to its overall health and wellbeing. A balanced diet meets your dog's energy needs and contains quality digestible proteins, carbohydrates, fats, minerals and vitamins. Dogs require a wide range of nutrients in different quantities over the course of their lives. For more information about dog nutrition talk to your veterinary health care team.



Dog Walking Areas

- **Off-leash all year:**
Kaikōhe: Old Landfill at Lindvart Park
Kerikeri: Rolands Wood, Sammaree Reserve, Waitotara Reserve.

- **Off-leash all year (except 15 Dec-31 Jan and public holidays, from 10am -5pm):**
Ahipara, Cable Bay, Coopers Beach, Hihī Beach, Mahinepua Beach, Paihia Beach, Russell Beach, Tapeka Point Beach.

Special Character Beaches

- that include **Prohibited zones:**
Taupō Bay, Te Haumi, Te Tii Bay, Waitangi beaches
- that include **off-leash and on-leash areas:**
Tauranga Bay.

Take the lead

Pay online with myfndc



- It's quicker, easier and available 24/7.
- Your dog registration will be cheaper if you pay before 1 September.

Register for My FNDC to make payments easier at fndc.govt.nz/our-services/dogs/register-your-dog

Lost & found hounds

Do you want to increase your chances of finding your missing pooch? And reduce the time it takes to find them? Then get your pal microchipped.

Make it even easier to find your dog by keeping a note of its 15-digit microchip code.

If your dog loses its collar and reg tags, a microchip is vital. We can add the microchip code to the National Dog Database for you.

Found a dog?

Let us know as soon as possible to reduce stress — for the dog, the owner and you.

Adopt a dog



- It pays to be kind — desexing, microchipping, vaccination, parvo tests and registration are ALL included in our adoption fee.
- To find out more about doggos wanting a forever home, go to: www.facebook.com/adoptadogFNDC
- We spread the love by adopting out across the country. So, send friends and whānau looking for a fur friend our way or to our facebook page.

Dogs registered in the Far North



All dogs must be registered by law

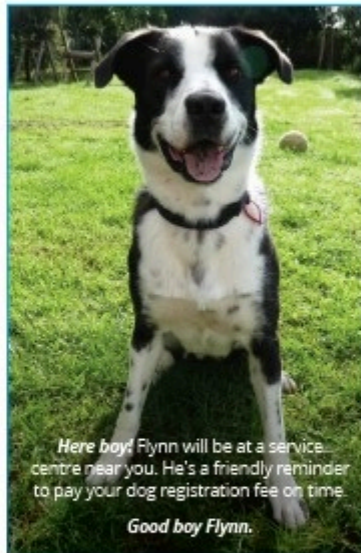
Source: FNDC Animal Management Team, May 2022

Doggone it

Your dog registration helps us to:



For more info visit: www.fndc.govt.nz/our-services/dogs



Here boy! Flynn will be at a service centre near you. He's a friendly reminder to pay your dog registration fee on time.

Good boy Flynn.

New animal shelter opens

We've opened a brand new animal shelter in Kaitiāia for dogs from across the district.

It has quarantining for puppies, exercise areas and veterinary facilities.

During its first eight months, 34 dogs were adopted from the shelter and 20 were given to rescue groups. The purpose-built shelter cost \$1.5 million.



FNDC Animal Control services

Call: 0800 920 029

Email: ask.us@fndc.govt.nz

Visit: www.fndc.govt.nz/our-services/dogs

[facebook.com/adoptadogFNDC](https://www.facebook.com/adoptadogFNDC)