

Maple Technical City, Land Information New Zealand



0 1 2 km

Projection NZTM2000. Datum NZGD2000. Scale: 1:36,112

DISCLAIMER:
 While the Far North District Council strives to keep the data in this service current, it may not be the most recent or most accurate data available. No reliance on the information contained on this map by any person is permitted. FNDC will not be liable for any omissions or errors of information contained on this map. FNDC recommends that persons seek specific advice on individual properties from FNDC and other specialist organisations which may hold more up to date or accurate information.

Map 1 - Esplanade Priority Areas



FNDIC, Eagle Technology, Land Information New Zealand



Projection NZTM2000. Datum NZGD2000. Scale: 1:9,028

Map 2 - Kerikeri Inlet

DISCLAIMER:
 While the Far North District Council strives to keep the data in this service current, it may not be the most recent or most accurate data available. No reliance on the information contained on this map by any person is permitted. FNDIC will not be liable for any omissions or errors of information contained on this map. FNDIC recommends that persons seek specific advice on individual properties from FNDIC and other specialist organisations which may lead more up to date or accurate information.



FND, Tagle Technology, Land Information New Zealand

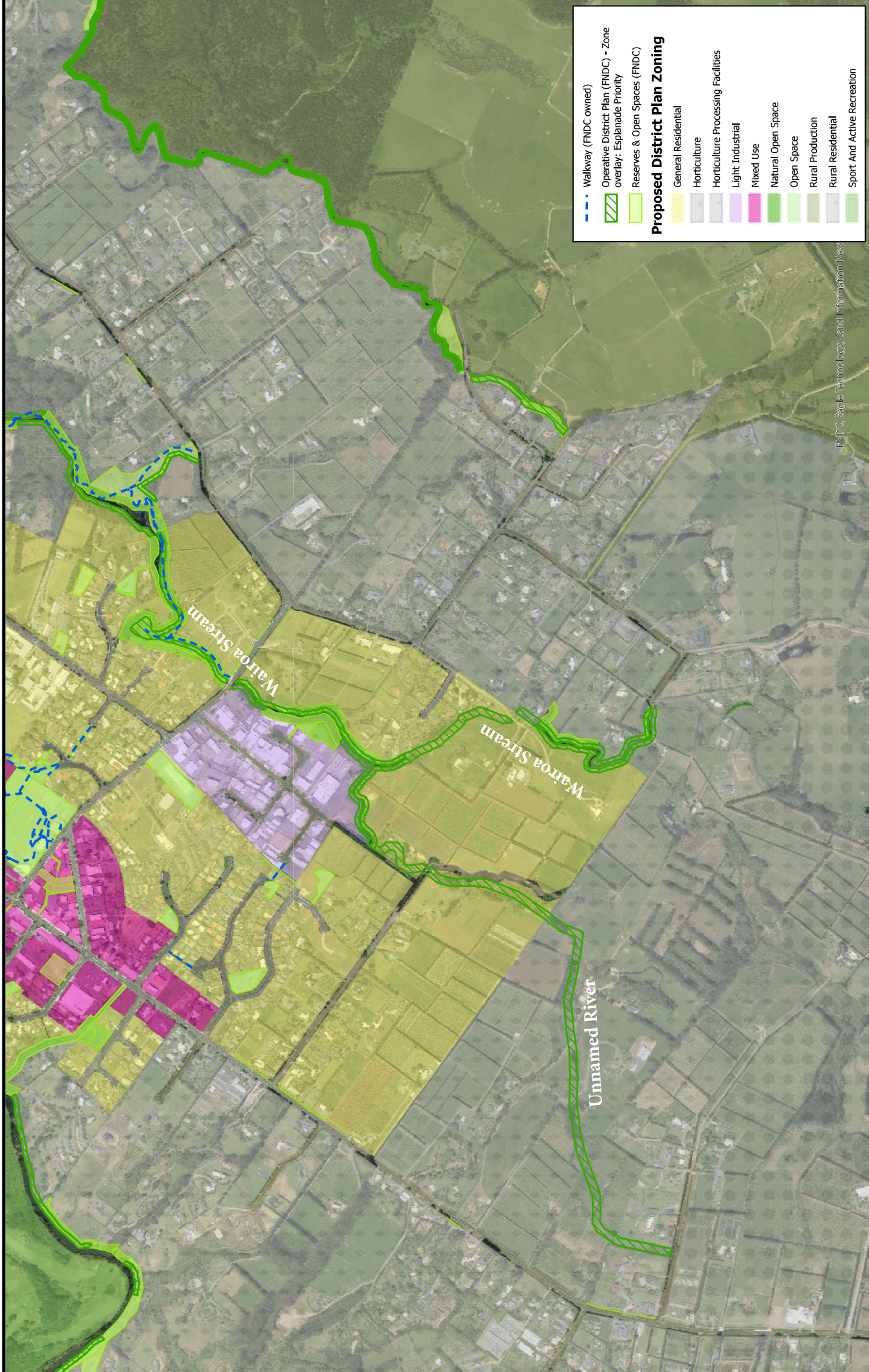


0 0 1 km
 Projection NZTM2000. Datum NZGD2000. Scale: 1:9,028

Map 3 - Okura River



DISCLAIMER:
 While the Far North District Council strives to keep the data in this service current, it may not be the most recent or most accurate data available. No reliance on the information contained on this map by any person is permitted. FND will not be liable for any omissions or errors of information contained on this map. FND recommends that persons seek specific advice on individual properties from FND and other specialist organisations which may hold more up to date or accurate information.



- - - Walkway (FNDC owned)
 - Operative District Plan (FNDC) - Zone overlay: Esplanade Priority
 - Reserves & Open Spaces (FNDC)
- Proposed District Plan Zoning**
- General Residential
 - Horticulture
 - Horticulture Processing Facilities
 - Light Industrial
 - Mixed Use
 - Natural Open Space
 - Open Space
 - Rural Production
 - Rural Residential
 - Sport And Active Recreation

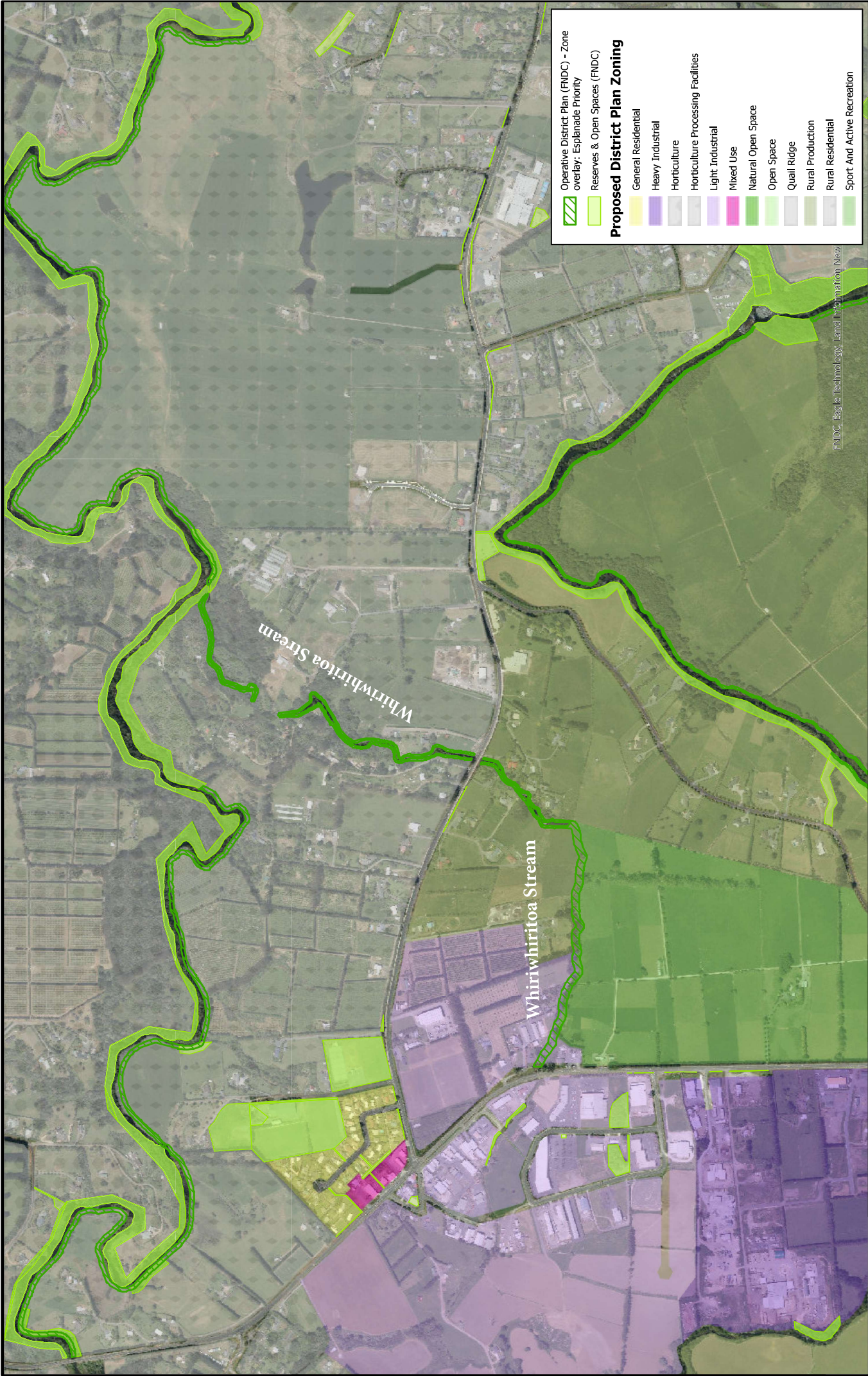
FNDC, Eagle Technology, Land Information New Zealand



Projection NZTM2000. Datum NZGD2000. Scale: 1:9,028

Map 4 - Wairoa Stream

DISCLAIMER:
While the Far North District Council strives to keep the data in this service current, it may not be the most recent or most accurate data available. No reliance on the information contained on this map by any person is permitted. FNDC will not be liable for any omissions or errors of information contained on this map. FNDC recommends that persons seek specific advice on individual properties from FNDC and other specialist organisations which may hold more up to date or accurate information.



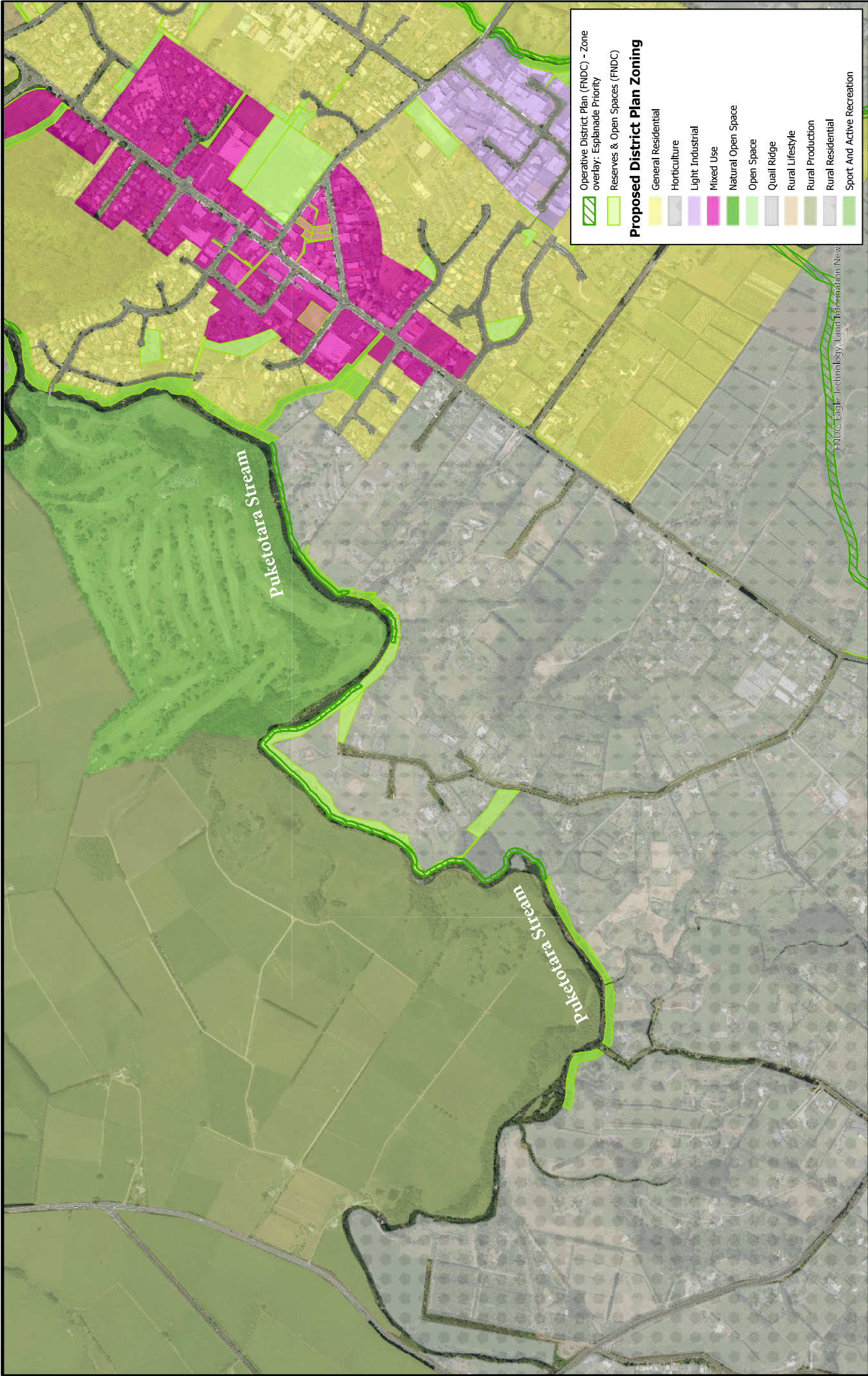
FNDIC, Te Aro Te Kaitiaki, Land Information New Zealand



Projection NZTM2000. Datum NZGD2000. Scale: 1:9,028

DISCLAIMER:
 While the Far North District Council strives to keep the data in this service current, it may not be the most recent or most accurate data available. No reliance on the information contained on this map by any person is permitted. FNDIC will not be liable for any omissions or errors of information contained on this map. FNDIC recommends that persons seek specific advice on individual properties from FNDIC and other specialist organisations which may hold more up to date or accurate information.

Map 5 - Whiriwhiritoa Stream



FNDIC: Eagle Technology, Land Information New

Map 6 - Puketotara Stream



Projection NZTM2000. Datum NZGD2000. Scale: 1:9,028

DISCLAIMER:
While the Far North District Council strives to keep the data in this service current, it may not be the most recent or most accurate data available. No reliance on the information contained on this map by any person is permitted. FNDIC will not be liable for any omissions or errors of information contained on this map. FNDIC recommends that persons seek specific advice on individual properties from FNDIC and other specialist organisations which may hold more up to date or accurate information.