

# *Te Anga o Te Pātukurea / Te Pātukurea Kerikeri-Waipapa sub district spatial plan*

---

E Te Whakarāpopoto i ngā Kaupapa Matua / Emerging Themes  
Consultation Summary

20 February 2024



## Ngā Kaupapa / Contents

---

<b>Te Pūtake o te Kōrero / Executive Summary .....</b>	<b>2</b>
<b>1. Hei Whakataki Kōrero / Introduction .....</b>	<b>4</b>
<b>2. Te Whakarāpopoto o ngā Kaupapa / Summary of themes .....</b>	<b>5</b>
<b>3. Te Whakapā atu ki ngā hapori e whai pānga ana / Consulting with our community and stakeholders .....</b>	<b>7</b>
<b>4. He aha ngā whakaaro o te hunga Rangatahi? / What did Rangatahi have to say? .....</b>	<b>10</b>
<b>5. Te Whakarāpopo i ngā Kōrero / Summary of consultation findings .....</b>	<b>12</b>

## Te Pūtake o te Kōrero / Executive Summary

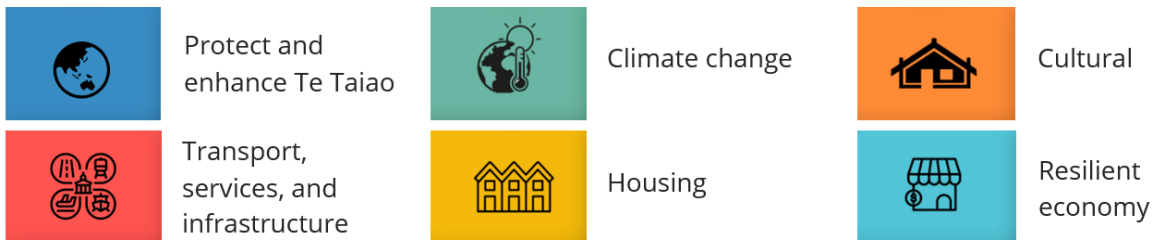
Far North District Council, in partnership with Te Pātukurea Hapū Rōpū, is developing a sub-district spatial plan for Kerikeri-Waipapa. The plan – called **Te Pātukurea** – will guide growth and investment in the Kerikeri-Waipapa area for the next 30 years.

As phase one of a two-phase public consultation approach for Te Pātukurea, feedback was sought across November and December 2023 on what matters most for the future of Kerikeri-Waipapa and the district from:

- The community and rangatahi.
- Central government and other key stakeholders.

To help identify priority matters for discussion, Council and the Hapū Rōpū leveraged from existing work done on Te Pātukurea to develop six key themes.

### Our six key themes



Council received **516 pieces of feedback** across stakeholders and the community (467), and rangatahi (49).

The prioritisation of these six key themes across different groups is shown in the image below.

### Prioritisation of our six key themes

	01	02	03	04	05	06
Hapū rōpū						
Community & stakeholders						
Rangatahi						

While there was variance in the prioritisation of key matters cross the groups all six key themes were considered important by one or more groups. This variation of priorities needs to be reflected in the objectives for the plan.

This report summarises the findings of our consultation to inform the objectives for Te Pātukurea. From there, the project team will use these objectives to inform the development and assessment of

potential growth options. Once confirmed with Hapū Rōpū and Council, the project team will engage with the community on these growth options in the second half of 2024.

# 1. Hei Whakataki Kōrero / Introduction

---

## Report overview

Kerikeri-Waipapa has experienced significant population growth over recent years, leading to residential and commercial development in an ad hoc, unplanned way. While a Structure Plan for this area was adopted by Council in 2007 it remains partially unimplemented with parts of the recommended responses now being included in the review of the District Plan. The area has changed significantly since 2007, meaning a refresh of the proposals within the Structure Plan is necessary.

The outcomes of the Structure Plan have been used as a starting point to develop of a sub-district spatial plan for Kerikeri-Waipapa. The plan – called **Te Pātukurea** (a name gifted by Hapū Rōpū) – will guide growth and investment in the Kerikeri-Waipapa area for the next 30 years. The development of Te Pātukurea helps us to manage growth through identifying areas best suited to create well-functioning urban environments that enable all people and communities to provide for their social, economic, and cultural wellbeing, and for their health and safety, now and into the future.

To learn more about Te Pātukurea and how it fits in the broader Far North spatial planning context please see our **Te Anga o Te Pātukurea / Te Pātukurea Framework Document** for further details.

In November 2023 and December 2023 Council and the Te Pātukurea Hapū Rōpū carried out the first of two phases of public consultation to support the on-going preparation of Te Pātukurea through 2024. Front of mind when developing our engagement approach was being clear about our who our Kerikeri-Waipapa community and stakeholders are. This allowed us to make sure our approach was inclusive and broad. Engaging widely is the best way to ensure that we take everyone's values, ideas, and aspirations into account to create the best future possible for our current and future generations.

This report sets out a high-level summary of the first round of public engagement.

## Existing stakeholder engagement

In 2021, Council directed staff to review the 2007 KKE/W structure plan in line with the provisions for a Future Development Strategy under the National Policy Statement – Urban Development.

Between February to August 2022, Council consulted and engaged with relevant government agencies, hapū, providers of additional infrastructure, relevant providers of nationally significant infrastructure, developers and members of the property sector, resident and community groups and other stakeholders. A key aspect of this early engagement was the partnership with, and establishment of, Te Pātukurea Hapū Rōpū as a governance body for the spatial plan project.

Through hui and workshops, stakeholders and community groups had the opportunity to inform the emerging themes and assumptions as well as initial scenario-testing.

A decision was made in late 2022 to put the process on hold until the completion of the submissions process for the Proposed District Plan (for more information, see the Strategy and Policy Committee Meeting Agenda for September 2022) and to allow the Hapū Rōpū to prepare a cultural impact assessment to inform Te Pātukurea spatial plan.

## Preparing Te Pātukurea

Developing Te Pātukurea includes five key phases, as shown below. These phases include several ‘connect’ points through the process where we will work with stakeholders, including central government and community groups, or the community directly. In addition, some central government agencies and our internal council subject matter experts will provide on-going support to the process.

### The five phases of preparing Te Pātukurea



To learn more about how we will engage and our principles and objectives for engagement, please see our **Updated Communications and Engagement Plan Summary (February 2023)** for further details.

## 2. Te Whakarāpopoto o ngā Kaupapa / Summary of themes

Our first phase of public consultation involved leveraging from existing work completed with stakeholders in 2022. This allowed us to define our focus areas for continued discussion with those stakeholders, a wider group of stakeholders and the community to inform the development of our objectives for Te Pātukurea.

Our public consultation in November and December 2023 sought to understand what the local community and stakeholders wanted Te Pātukurea to prioritise based on six key themes that emerged from our earlier work with stakeholders.

Our six key themes as endorsed and prioritised by Hapū Rōpū and Council are shown below.



While our six key themes are topic based (for ease of response and clarity of prioritisation) we understand these topics are interconnected and a multilayered response will be required to achieve the quality outcomes wanted. We also recognise that responding to our themes goes beyond Te Pātukurea and will require us to work with many other parts of Council in the development of associated strategies and plans (e.g., Housing Strategy and Open Space Strategy).

To learn more about how Te Pātukurea will be developed alongside other Council strategies and plans please see our ***Te Anga o Te Pātukurea / Te Pātukurea Framework Document*** for further details.

### 3. Te Whakapā atu ki ngā hapori e whai pānga ana / Consulting with our community and stakeholders

#### Our community

Multiple methods were used to raise awareness about the consultation opportunity and to encourage online and in person community participation.

Overall, Council received **516 pieces of feedback** from the community via website (online survey, hardcopy feedback forms, Email, in-person events and Rangatahi youth exercise (see Section 4).

Around 350 people spoke with the project team across our five in person events. People that attended these events had the opportunity of providing their feedback by way of a post-it note comment.



Figure 1: Community Consultation event at The Old Packhouse Kerikeri, 11 November 2023

#### Who did we hear from?

Our consultation captured the views from a variety of age ranges. As shown in Figure 2, we primarily heard from those who are 46 and above, but the under 45's cumulatively represent 24% of our responses.

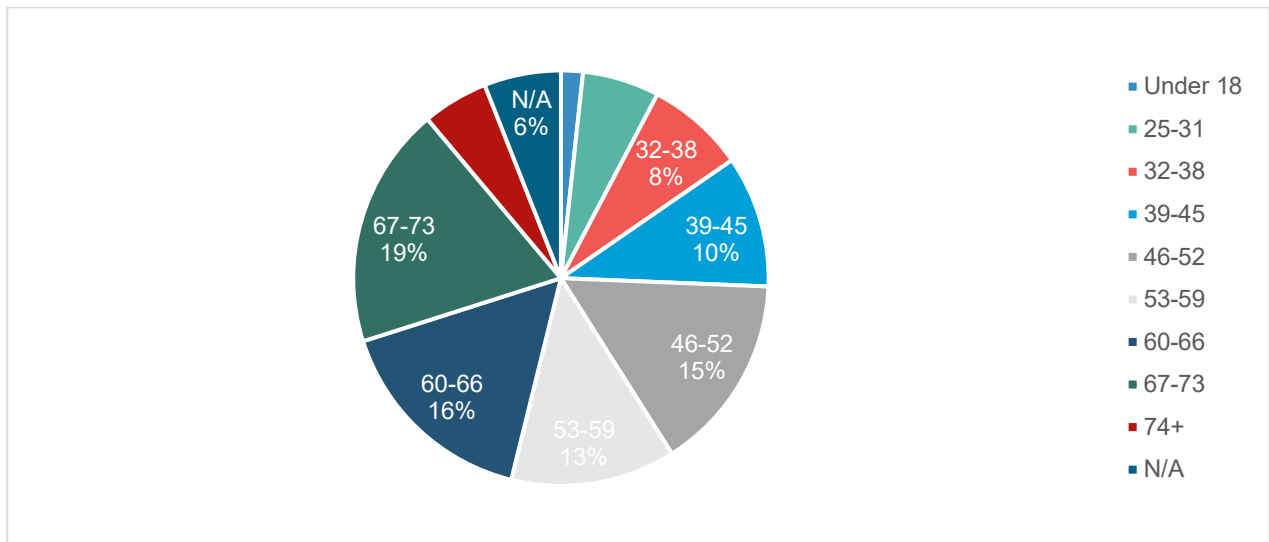


Figure 2: Age of respondents from community engagement



## Our stakeholders

Emails advising of the planned public consultation and project progress were issued to a stakeholder email distribution list of **more than 25 stakeholders** grouped as follows:

- **Advisory Group: Akeake** – Central government agencies, developers, and organisations integral to the funding and implementation of the project.
- **Advisory Group: Mahoe** – Representatives from various stakeholder groups with knowledge and insights into the dynamics of the Kerikeri-Waipapa community.
- **Subject Matter Experts** – Council specialists for key matters like open space, transport and water.

Feedback was received from various stakeholders, including, but not limited to:

- Carbon Neutral Trust NZ.
- Kāinga Ora: Homes and Communities.
- Our Kerikeri.
- Te Tūāpapa Kura Kāinga: Ministry of Housing and Urban Development.
- Vision Kerikeri.
- Kerikeri District Business Association.
- Waka Kotahi NZ Transport Agency.

## What we heard from our community and stakeholders

Our community and stakeholders were asked to prioritise the key themes and provide their aspirations for each theme. Cumulatively, the prioritisation for each of the key themes from most to least important was:



Of note within the community feedback, both under 40's and Māori ranked *Protecting and enhance te taiao* as their second (rather than third) priority and Māori ranked *cultural* as their fifth (rather than sixth) priority.

### Cultural

This key theme had a mostly positive response. People felt strongly that Māori values should be reflected in Kerikeri-Waipapa's future, with some comments prioritising the district's current multiculturalism.

### Housing

Aspirations within the housing theme were mixed. People want to see affordable housing, intensification, and more social housing, and improved urban design (including design principles and guidelines). Some people expressed that they do not want to see things like social or emergency housing, more retirement villages, or more housing and intensification in general.

### Climate change

Feedback under this theme saw a mix of sentiment for how this should be responded to by Te Pātukurea. People support more resilient infrastructure and nature-based solutions.

### Resilient economy

Aspirations within this key theme aligned closely with the character of the district, namely tourism, maintaining soils for farming and creating a vibrant town centre. Overall, people expressed that they want to see a stronger economy for Kerikeri-Waipapa, that offers more training, jobs, and business opportunities for the community.

### Transport, infrastructure, and services

People told us that they want to see improvements to existing infrastructure like roads, walkways and cycling facilities. This was the only theme to not receive any mixed or negative comments, demonstrating that this theme is front of mind for residents in Kerikeri-Waipapa.

## 4. He aha ngā whakaaro o te hunga Rangatahi? / What did Rangatahi have to say?

### How did rangatahi participate?

In partnership with Healthy Families Far North, Council empowered rangatahi to design and lead an engagement exercise targeted at capturing the youth perspective. It also saw Council uplift youth capability by providing a hands-on consultation experience that enabled youth to better understand skills such as facilitation, surveying and interviewing. This saw Council support rangatahi:

- Host a brainstorming session with Healthy Families to reframe the aspirations in a way that young people could understand and connect with
- Interview students from The Northern Health School (Te Kura Awhina Ora te Raki).
- Conduct interviews in the Kerikeri township
- Run a “Kai and Kōrero; how do we make Kerikeri a better place?” sausage sizzle

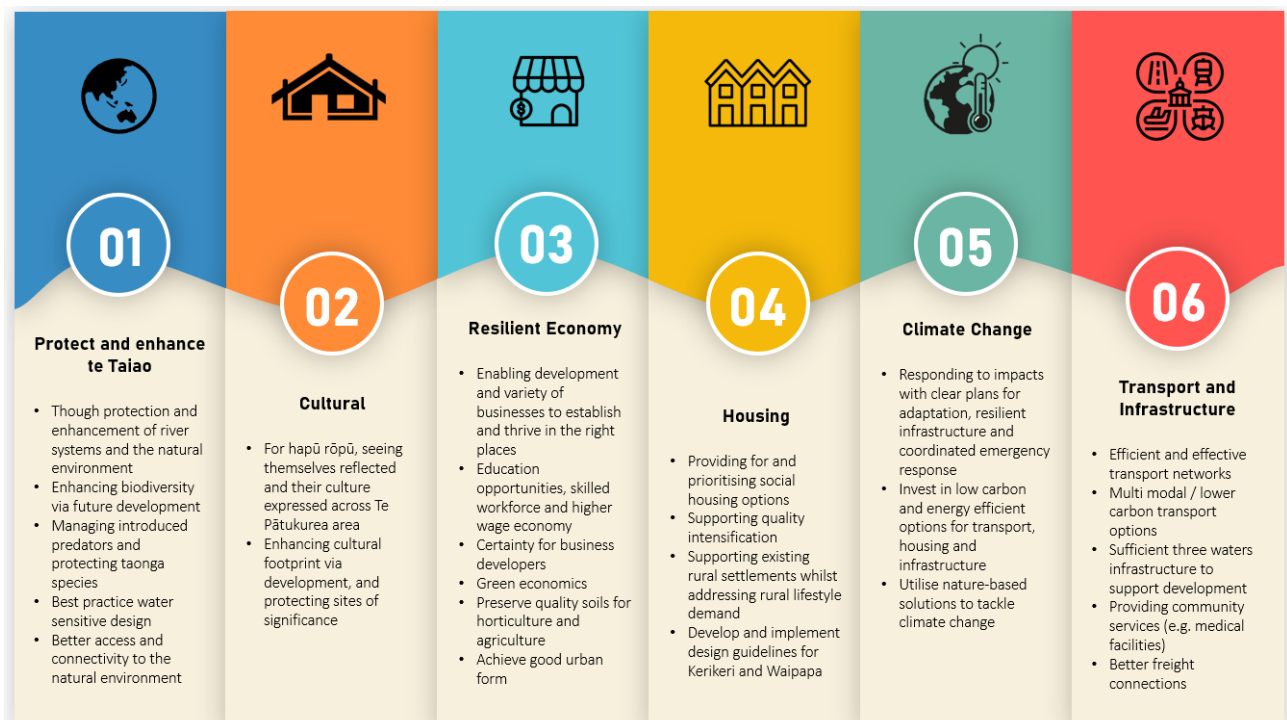
Key to this approach was making the exercise interactive. This saw the aspirations translated and pasted onto large ‘jenga’ blocks which were then used to help facilitate a kōrero about which of the six themes were most important.



Figure 3: Images from the rangatahi exercise.

### What we heard from rangatahi

The following summarises the aspirations most important to 49 rangatahi in Kerikeri-Waipapa today.



When focusing on aspirations for 30 years from now as opposed to the present, *resilient economy* became the most important for their future and *Cultural* and *protect and enhance te taiao* ranked joint second. In 30 years' time, rangatahi want to see more education around Te Ao Māori.

#### Protect and enhance te taiao

Rangatahi thought that this was an important theme for life in Kerikeri-Waipapa today. Sentiment was focused on protecting the environment, reducing the amount of litter, prevent river pollution and the like.

#### Cultural

Comments were mixed, with some wanting to see more celebration of Māori culture, and that their culture is what makes them unique. This sentiment was likely mixed where it perhaps incorporates the current lived experiences of Māori in the district.

#### Housing

Those with positive comments wanted to see more housing, acknowledging that housing is an issue that affects everybody. Feedback ranged from low-cost rentals, or more homes for the elderly.

#### Climate change

Rangatahi acknowledged climate change as an existing issue with varying levels of prioritisation.

#### Resilient economy

There was a consensus on the importance of economy; locally, rangatahi want to see support for local businesses.

#### Transport, infrastructure and services

Most feedback expressed aspirations for more infrastructure and improvements to existing infrastructure.

## 5. Te Whakarāpopo i ngā Kōrero / Summary of consultation findings

While the above sections confirm the prioritisation of the six key themes by different groups, this section seeks to bring all this information together and confirm what this means overall.

The image below compares how the different groups prioritised the themes.

	01	02	03	04	05	06
Hapū rōpū						
Community & stakeholders						
Rangatahi						

Of note:

- Hapū Rōpū and rangatahi prioritised *protect and enhance te taiao* and *cultural* themes more than the wider community and stakeholders.
- Overall, *housing* was consistently ranked as a mid-level priority.
- The prioritisation of *transport, infrastructure and services* varies the most across the groups.
- *Resilient economy* also has a varying level of prioritisation, however when rangatahi were explicitly thinking about 30 years' time their prioritisation of this theme was more aligned with the wider community and stakeholders.
- *Climate change* was consistently ranked at the lower end of prioritisation.

While there was variance in the prioritisation of key matters cross the groups all six key themes were considered important by one or more groups. What this tells us is that Te Pātukurea needs to respond to all themes and this variation of priorities needs to be reflected in the objectives for the plan.

Following our late 2023 community and stakeholder engagement next steps for engaging on Te Pātukurea are outlined in our **Updated Communications and Engagement Strategy Summary (February 2024)**. Key 'connect' points of note include:

- Stakeholder engagement in the development of potential growth options – First half of 2024
- Community consultation on potential growth options – Second half of 2024
- Stakeholder engagement on preferred growth options – Late 2024
- Community socialisation of the adopted Te Pātukurea spatial plan